

# COVID-19 Epidemiology Sri Lanka

## Epidemiology Unit Ministry of Health

31<sup>st</sup> January 2023

27.01.2020-31.01.2023

**671,989**

Total Number of Cases

**16,828**

Total Number of Deaths

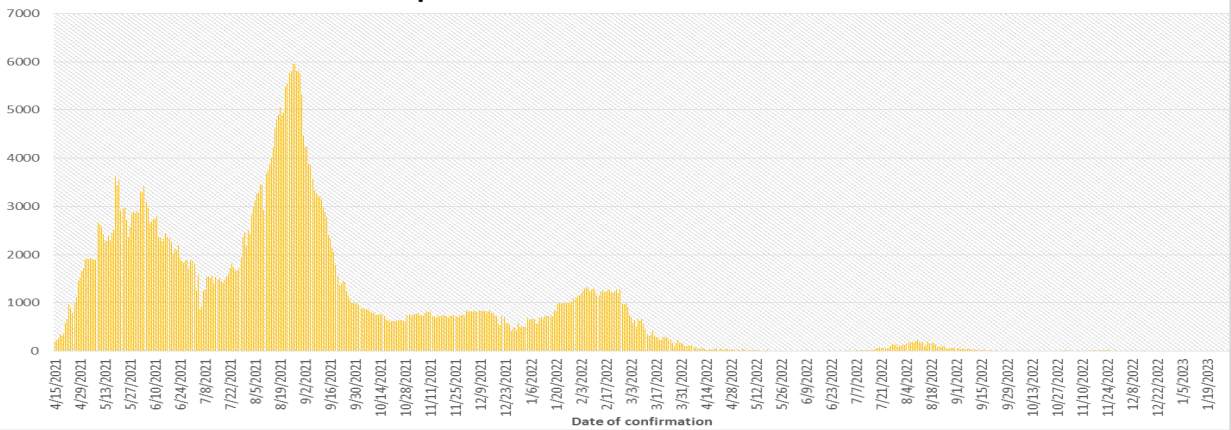
Number Vaccinated

At least 1<sup>st</sup> dose: 17,161,246  
 2<sup>nd</sup> dose : 14,768,419  
 1<sup>st</sup> booster : 8,247,788  
 2<sup>nd</sup> booster : 203,396

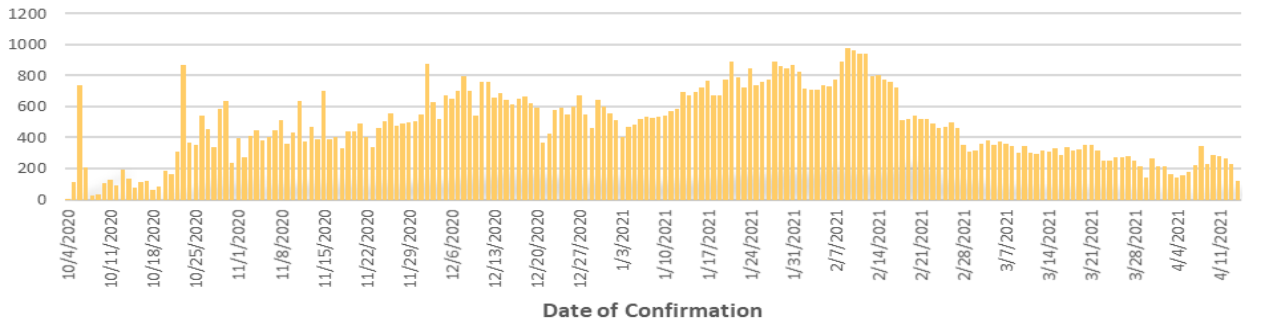
	Duration	No. of Cases	No. of Deaths	Case* Fatality Rate
1 <sup>st</sup> wave	27.01.2020-03.10.2020	3,396	13	0.38
2 <sup>nd</sup> wave	04.10.2020-14.04.2021	92,341	591	0.64
3 <sup>rd</sup> wave	15.04.2021-31.12.2022	576,252	16,224	2.81

\* Case is defined as a laboratory confirmed patient

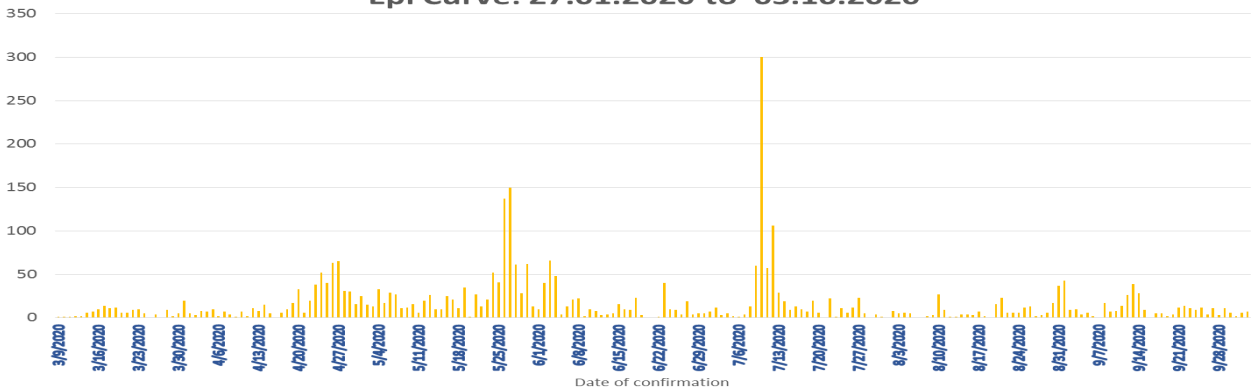
Epi curve:15-04-2021 to 31-01-2023



Epi Curve : 04.10.2020 to 14.04.2021



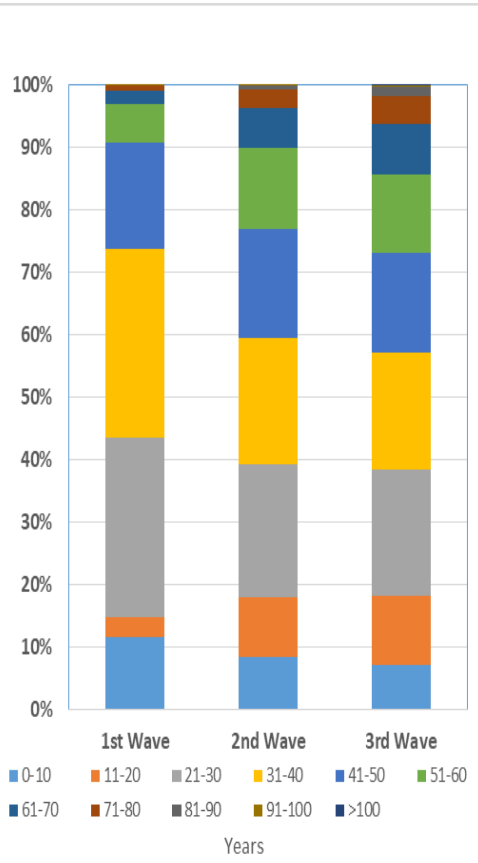
Epi Curve: 27.01.2020 to 03.10.2020



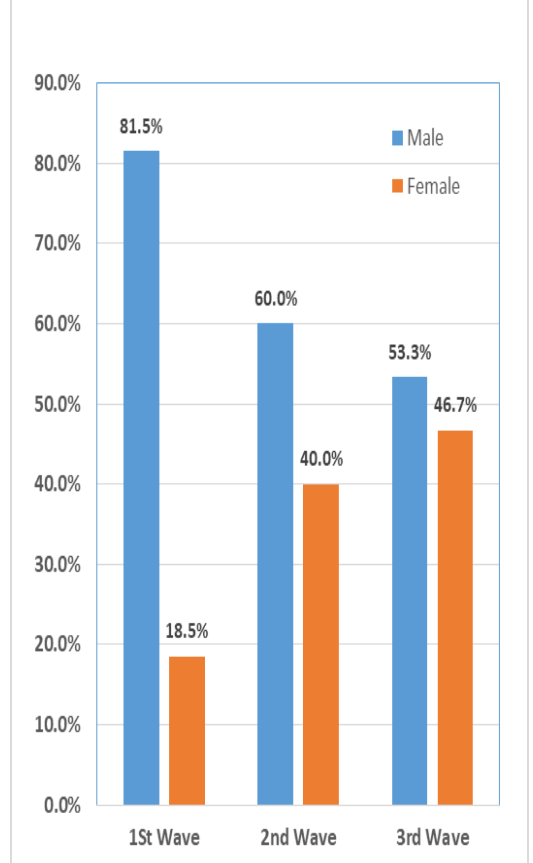
### COVID-19 Cases : District Distribution

District	1 <sup>st</sup> wave	2 <sup>nd</sup> wave	3 <sup>rd</sup> wave	Total
Colombo	174	32123	111951	144248
Gampaha	51	18483	97212	115746
Kalutara	72	6986	51690	58748
Kandy	19	5710	16747	22476
Kurunegala	30	3191	28377	31598
Galle	4	2645	43224	45873
Ratnapura	9	3654	20099	23762
Matara	4	1544	21786	23334
Matale	5	1214	14368	15587
Nuwara Eliya	2	1259	11081	12342
Kegalle	10	1770	11702	13482
Jaffna	16	1441	10893	12350
Badulla	4	1358	13289	14651
Puttalam	39	1024	14327	15390
Anuradhapura	31	820	14249	15100
Hambantota	3	710	19496	20209
Trincomalee	4	651	3732	4387
Monaragala	6	545	14765	15316
Polonnaruwa	10	475	4784	5269
Ampara	9	498	13569	14076
Kalmunai	18	1296	3913	5227
Batticaloa	1	699	9195	9895
Vavuniya	2	623	3042	3667
Mullaitivu	0	278	2018	2296
Kilinochchi	0	250	9777	10027
Mannar	0	379	2150	2529

### COVID-19 Cases by Age Group

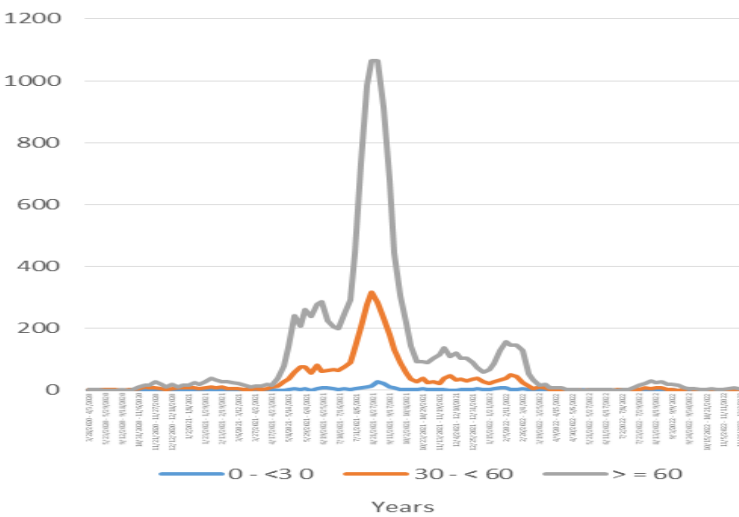


### COVID-19 Cases by Sex

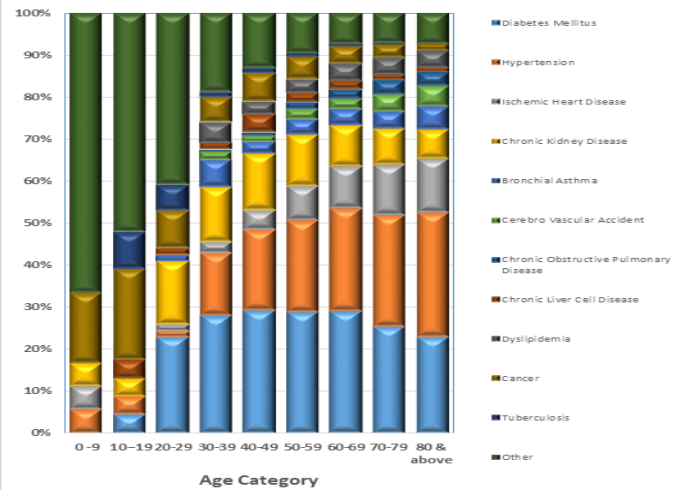


## Confirmed COVID-19 Deaths

### COVID-19 deaths— weekly distribution by age: 28.03.2020 – 31.01.2023

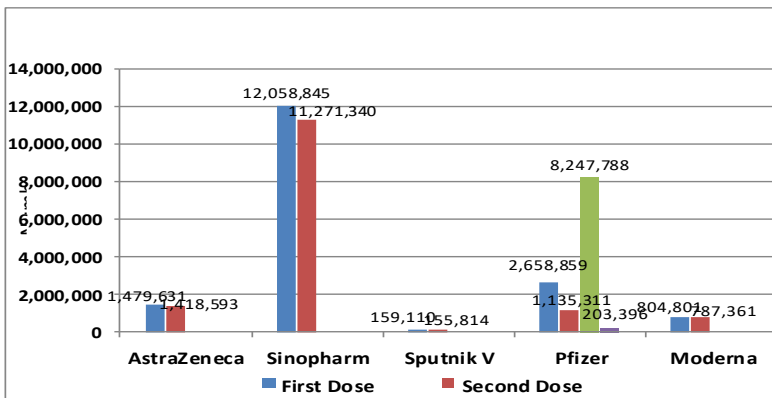


### Confirmed COVID-19 deaths by Co-morbidities



## Covid-19 Vaccination Program

### Vaccination update : 28.01.2021 to 31.01.2023



### Confirmed COVID-19 deaths by sex

