

COVID-19 Epidemiology Sri Lanka

Epidemiology Unit Ministry of Health

31st July 2022

27.01.2020-31.07.2022

665,739

Total Number of Cases

16,556

Total Number of Deaths

Number Vaccinated

At least 1st dose: 17,105,469

2nd dose : 14,555,882

1st booster : 8,007,696

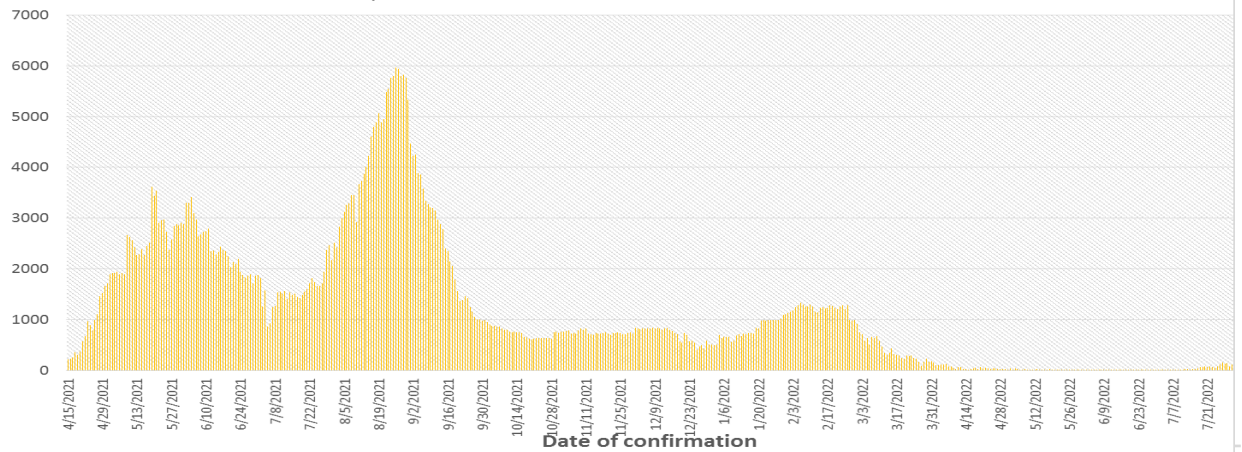
2nd booster : 27,021

	Duration	No. of Cases	No. of Deaths	Case* Fatality Rate
1st wave	27.01.2020-03.10.2020	3,396	13	0.38
2nd wave	04.10.2020-14.04.2021	92,341	591	0.64
3rd wave	15.04.2021-30.06.2022	570,002	15,952	2.79

* Case is defined as a laboratory confirmed patient

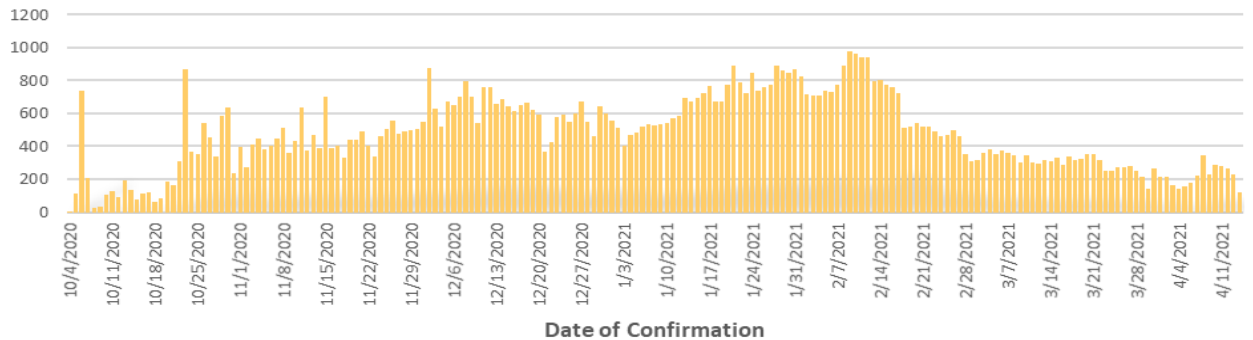
3rd wave

Epi Curve:15-04-2021 to 31-07-2022



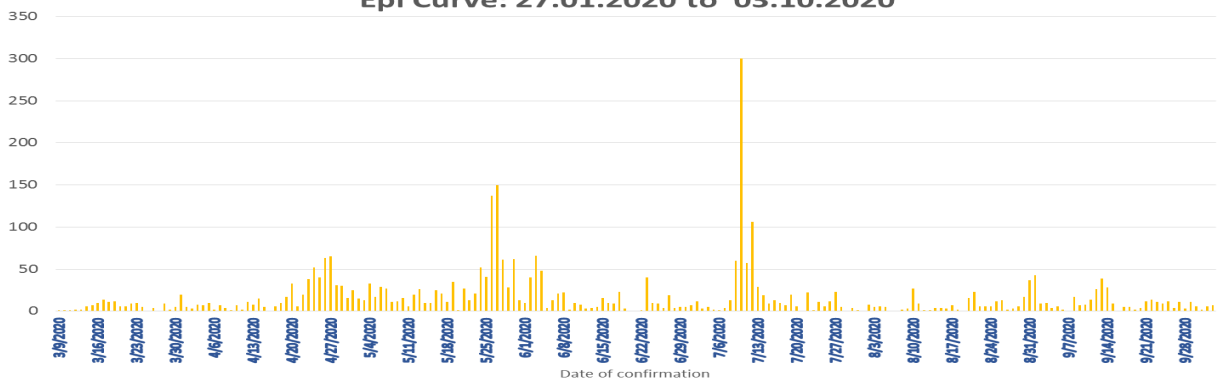
2nd wave

Epi Curve : 04.10.2020 to 14.04.2021



1st wave

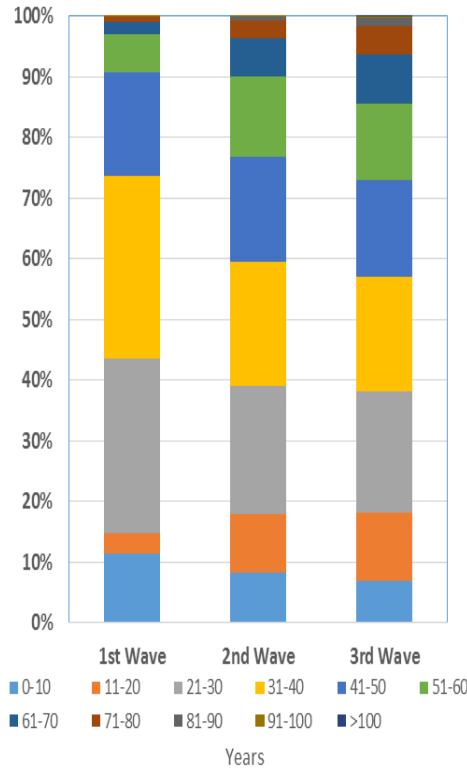
Epi Curve: 27.01.2020 to 03.10.2020



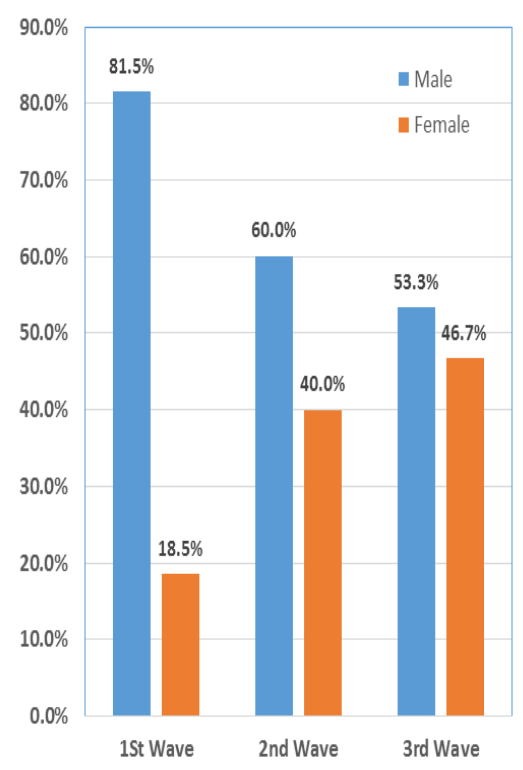
COVID-19 Cases : District Distribution

District	1 st wave	2 nd wave	3 rd wave	Total
Colombo	174	32123	108470	140767
Gampaha	51	18483	96223	114757
Kalutara	72	6986	51319	58377
Kandy	19	5710	16496	22225
Kurunegala	30	3191	28298	31519
Galle	4	2645	43065	45714
Ratnapura	9	3654	20051	23714
Matara	4	1544	21650	23198
Matale	5	1214	14314	15533
Nuwara Eliya	2	1259	11065	12326
Kegalle	10	1770	11631	13411
Jaffna	16	1441	10878	12335
Badulla	4	1358	13276	14638
Puttalam	39	1024	14129	15192
Anuradhapura	31	820	14214	15065
Hambantota	3	710	19382	20095
Trincomalee	4	651	3724	4379
Monaragala	6	545	14674	15225
Polonnaruwa	10	475	4765	5250
Ampara	9	498	13566	14073
Kalmunai	18	1296	3911	5225
Batticaloa	1	699	9173	9873
Vavuniya	2	623	3039	3664
Mullaitivu	0	278	1987	2265
Kilinochchi	0	250	9773	10023
Mannar	0	379	2147	2526

COVID-19 Cases by Age Group

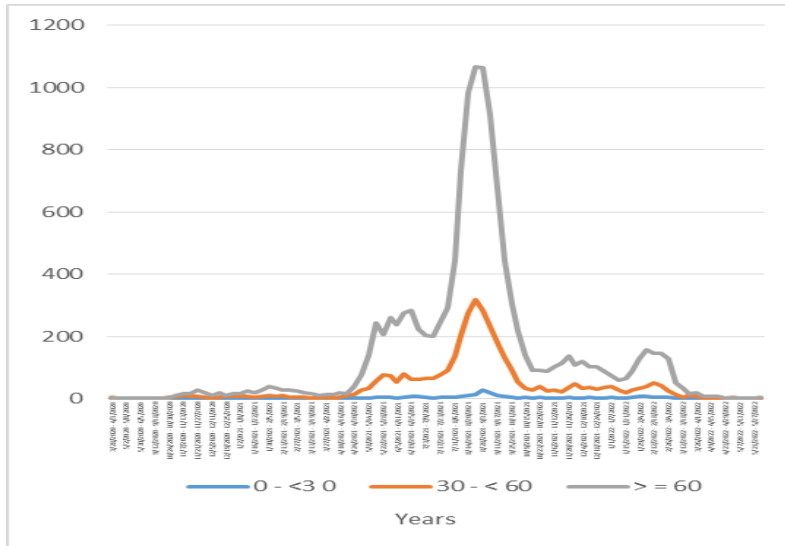


COVID-19 Cases by Sex

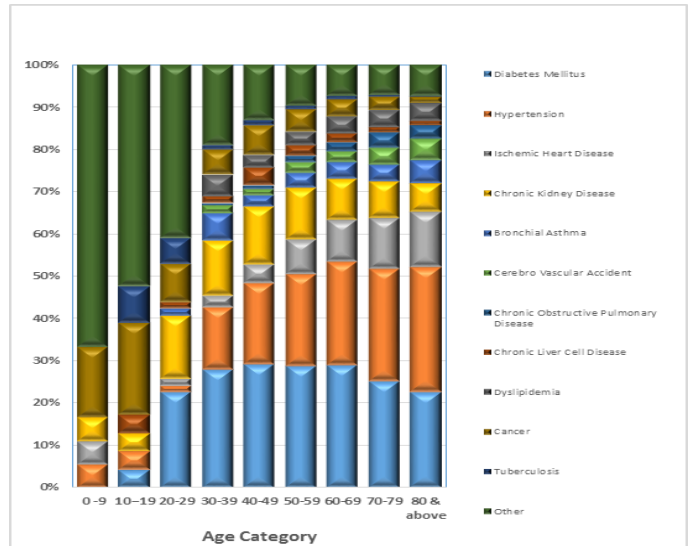


Confirmed COVID-19 Deaths

COVID-19 deaths– weekly distribution by age: 28.03.2020 – 31.07.2022

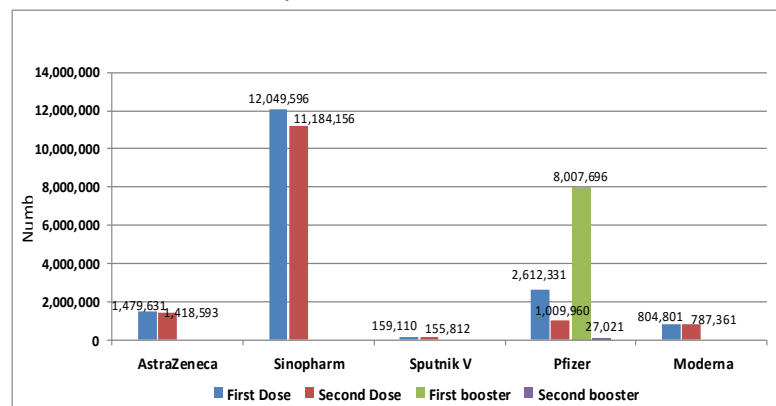


Confirmed COVID-19 deaths by Co-morbidities



Covid-19 Vaccination Program

Vaccination update : 28.01.2021 to 31.07.2022



Confirmed COVID-19 deaths by sex

