

COVID-19 Epidemiology Sri Lanka

Epidemiology Unit

Ministry of Health

30th June 2022

27.01.2020-30.06.2022

664,123
Total Number of Cases

16,521
Total Number of Deaths

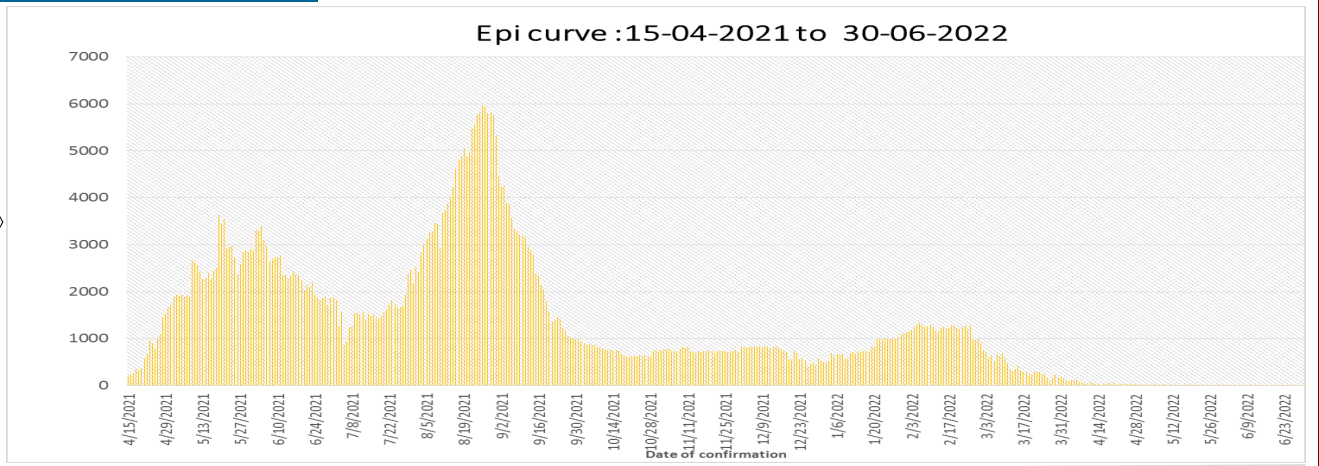
Number Vaccinated

At least 1st dose: **17,103,457**
 2nd dose : **14,549,777**
 1st booster : **7,996,267**
 2nd booster : **11,353**

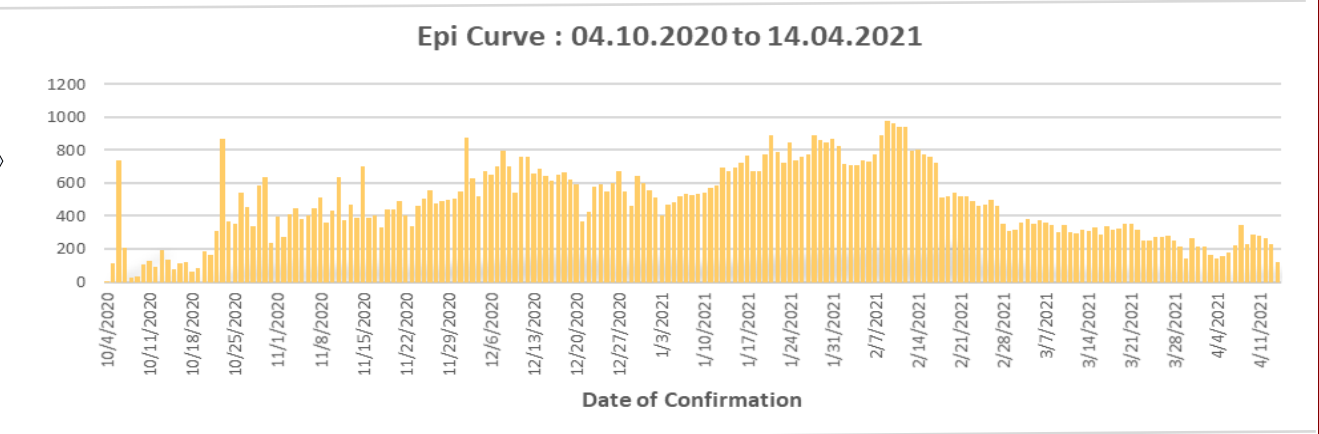
	Duration	No. of Cases	No. of Deaths	Case* Fatality Rate
1st wave	27.01.2020-03.10.2020	3,396	13	0.38
2nd wave	04.10.2020-14.04.2021	92,341	591	0.64
3rd wave	15.04.2021-30.06.2022	568,386	15,917	2.80

*Case is defined as a laboratory confirmed patient

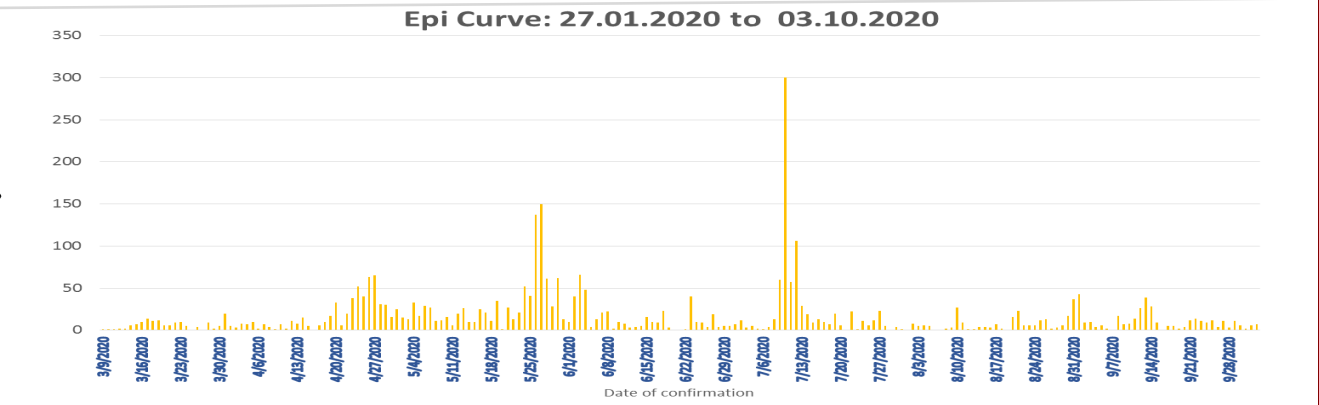
3rd wave



2nd wave



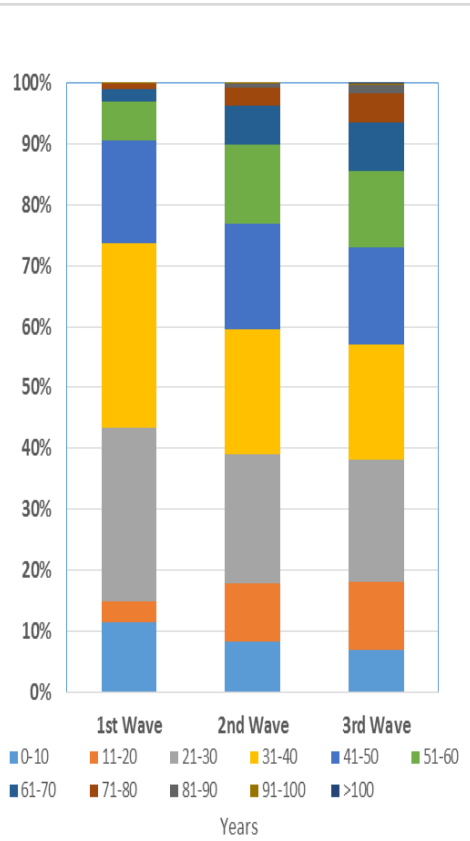
1st wave



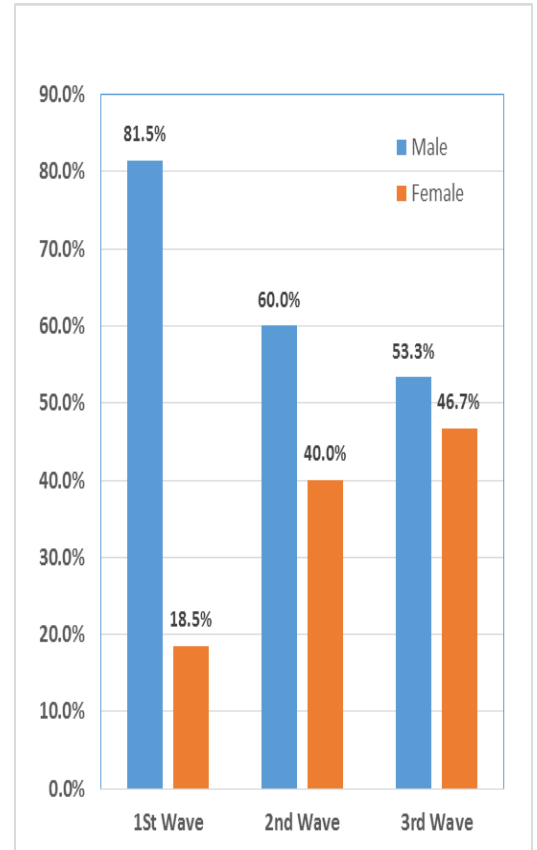
COVID-19 Cases : District Distribution

District	1 st wave	2 nd wave	3 rd wave	Total
Colombo	174	32123	107446	139743
Gampaha	51	18483	95988	114522
Kalutara	72	6986	51214	58272
Kandy	19	5710	16481	22210
Kurunegala	30	3191	28284	31505
Galle	4	2645	43045	45694
Ratnapura	9	3654	20039	23702
Matara	4	1544	21648	23196
Matale	5	1214	14312	15531
Nuwara Eliya	2	1259	11059	12320
Kegalle	10	1770	11622	13402
Jaffna	16	1441	10872	12329
Badulla	4	1358	13271	14633
Puttalam	39	1024	14116	15179
Anuradhapura	31	820	14207	15058
Hambantota	3	710	19379	20092
Trincomalee	4	651	3722	4377
Monaragala	6	545	14672	15223
Polonnaruwa	10	475	4763	5248
Ampara	9	498	13566	14073
Kalmunai	18	1296	3910	5224
Batticaloa	1	699	9170	9870
Vavuniya	2	623	3039	3664
Mullaitivu	0	278	1987	2265
Kilinochchi	0	250	9773	10023
Mannar	0	379	2147	2526

COVID-19 Cases by Age Group

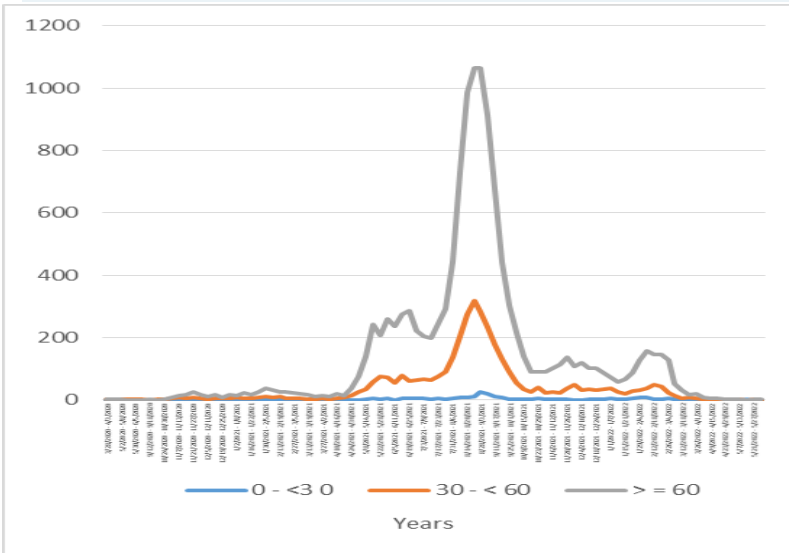


COVID-19 Cases by Sex

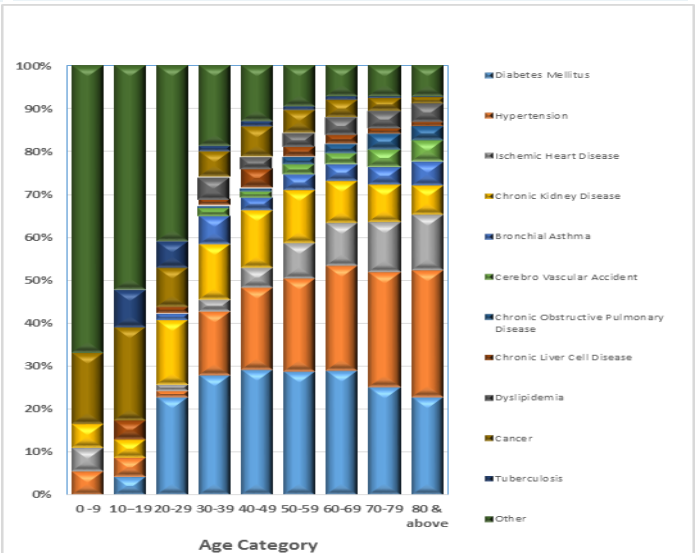


Confirmed COVID-19 Deaths

COVID-19 deaths – weekly distribution by age: 28.03.2020 – 30.06.2022

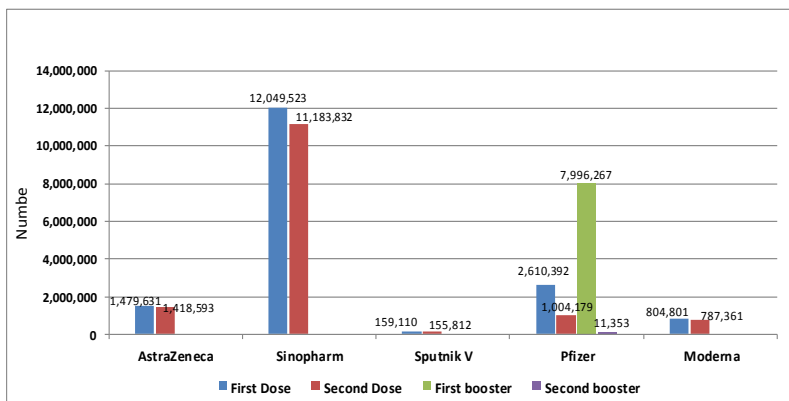


Confirmed COVID-19 deaths by Co-morbidities



Covid-19 Vaccination Program

Vaccination update : 28.01.2021 to 30.06.2022



Confirmed COVID-19 deaths by sex

