

# COVID-19 Epidemiology Sri Lanka

## Epidemiology Unit Ministry of Health

31<sup>st</sup> March 2022

27.01.2020-31.03.2022

**661,631**

Total Number of Cases

**16,477**

Total Number of Deaths

Number Vaccinated

At least 1<sup>st</sup> dose: 17,010,480

2<sup>nd</sup> dose : 14,422,231

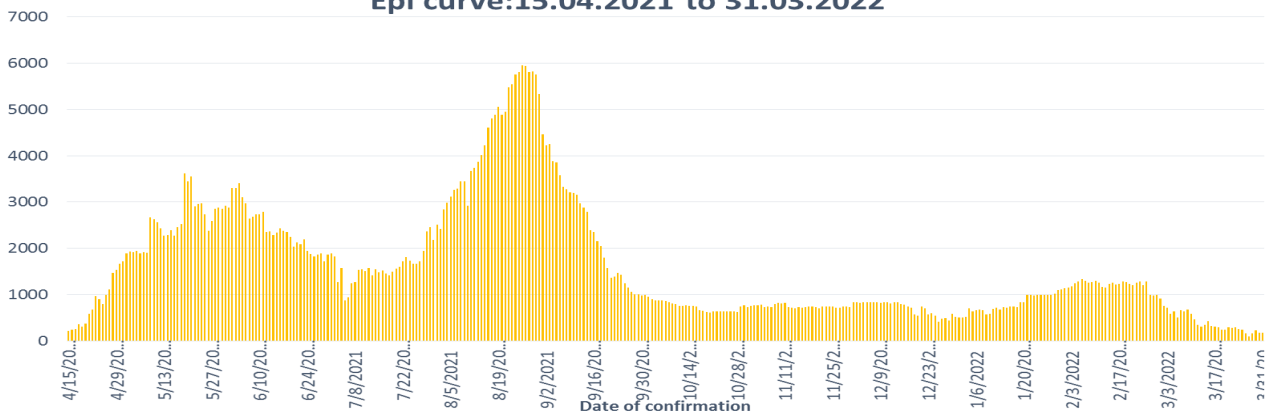
3<sup>rd</sup> dose : 7,877,798

	Duration	No. of Cases	No. of Deaths	Case* Fatality Rate
1 <sup>st</sup> wave	27.01.2020-03.10.2020	3,396	13	0.38
2 <sup>nd</sup> wave	04.10.2020-14.04.2021	92,341	591	0.64
3 <sup>rd</sup> wave	15.04.2021-31.03.2022	565,894	15,873	2.80

\*Case is defined as a laboratory confirmed patient

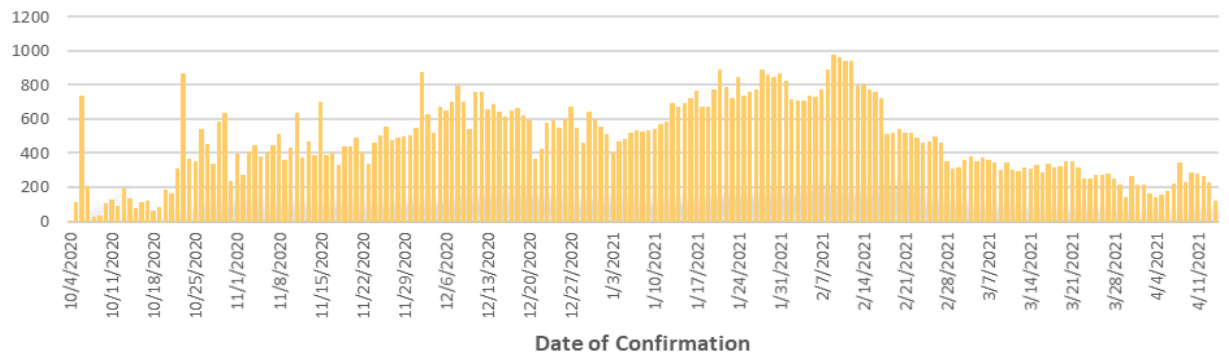
Epi curve:15.04.2021 to 31.03.2022

3<sup>rd</sup> wave



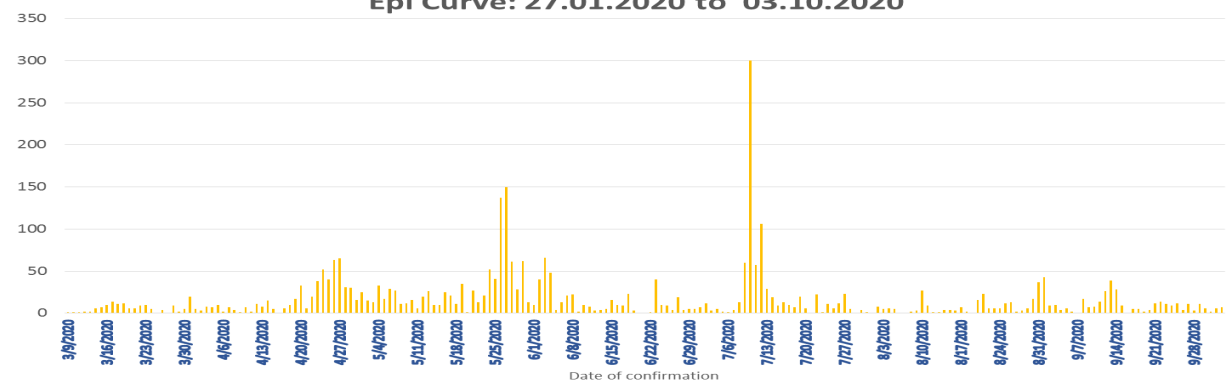
Epi Curve : 04.10.2020 to 14.04.2021

2<sup>nd</sup> wave



Epi Curve: 27.01.2020 to 03.10.2020

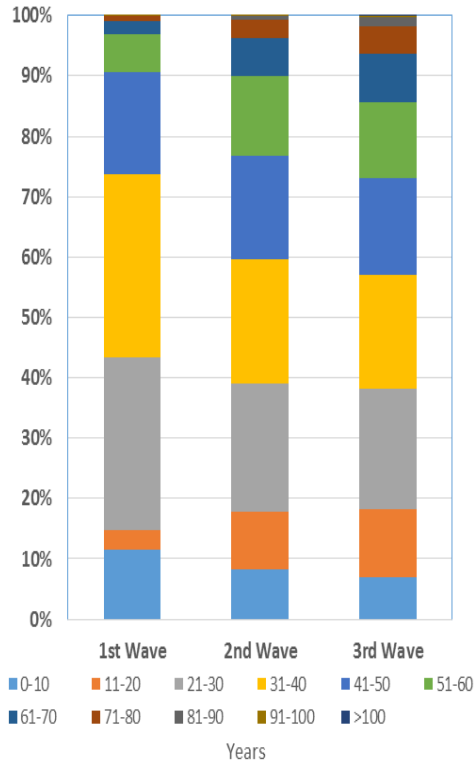
1<sup>st</sup> wave



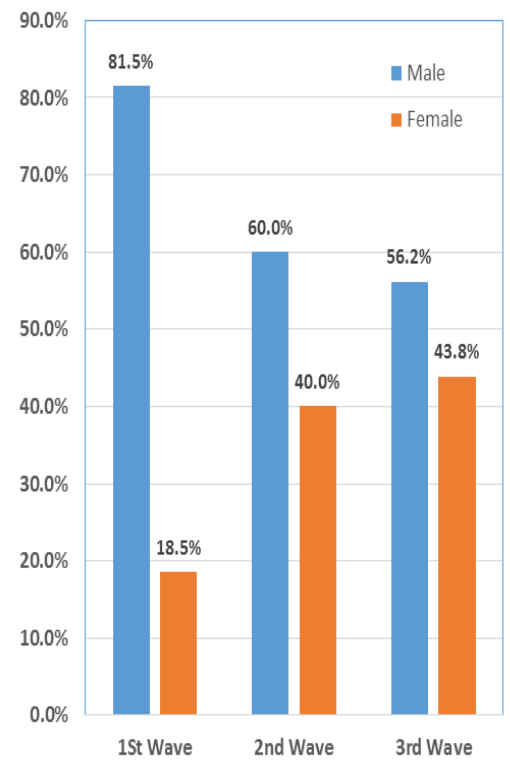
### COVID-19 Cases : District Distribution

District	1 <sup>st</sup> wave	2 <sup>nd</sup> wave	3 <sup>rd</sup> wave	Total
Colombo	174	32123	106396	138693
Gampaha	51	18483	95648	114182
Kalutara	72	6986	51077	58135
Kandy	19	5710	16422	22151
Kurunagala	30	3191	28218	31439
Galle	4	2645	42755	45404
Ratnapura	9	3654	19984	23647
Matara	4	1544	21512	23060
Matale	5	1214	14300	15519
Nuwara Eliya	2	1259	11056	12317
Kegalle	10	1770	11609	13389
Jaffna	16	1441	10871	12328
Badulla	4	1358	13228	14590
Puttalam	39	1024	14092	15155
Anuradhapura	31	820	14169	15020
Hambantota	3	710	19251	19964
Trincomalee	4	651	3721	4376
Monaragala	6	545	14645	15196
Polonnaruwa	10	475	4760	5245
Ampara	9	498	13561	14068
Kalmunai	18	1296	3910	5224
Batticaloa	1	699	9169	9869
Vavuniya	2	623	3039	3664
Mullaitivu	0	278	1984	2262
Kilinochchi	0	250	9742	9992
Mannar	0	379	2147	2526

### COVID-19 Cases by Age Group

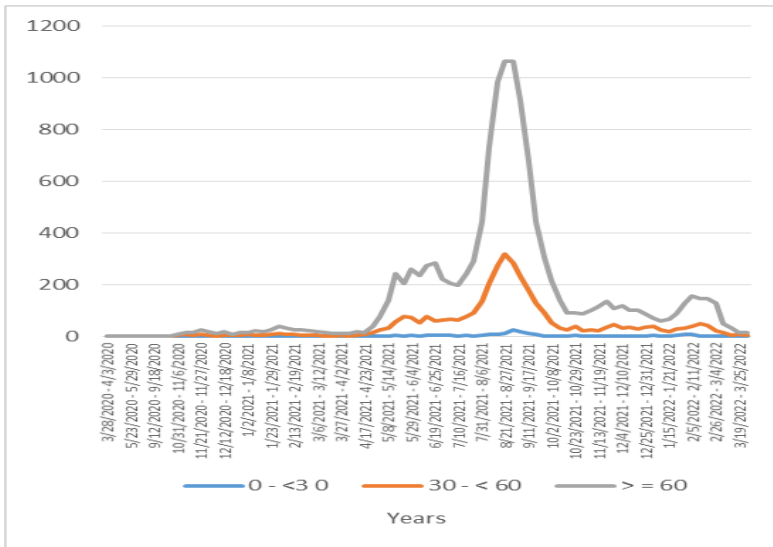


### COVID-19 Cases by Sex

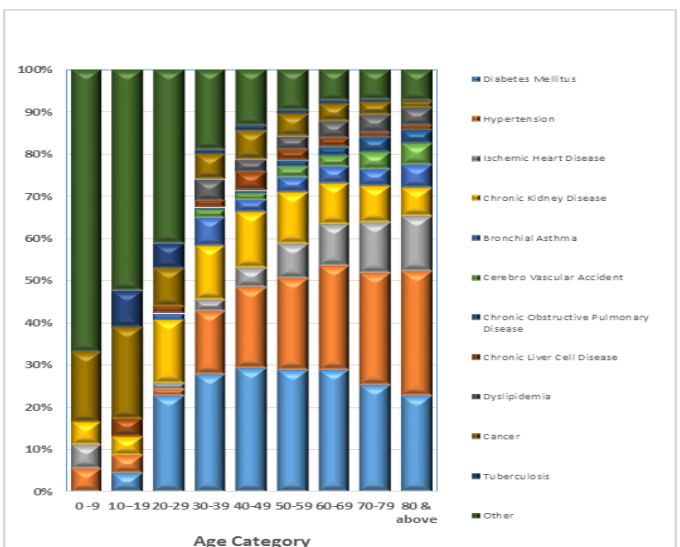


## Confirmed COVID-19 Deaths

COVID-19 deaths– weekly distribution by age: 28.03.2020 – 31.03.2022

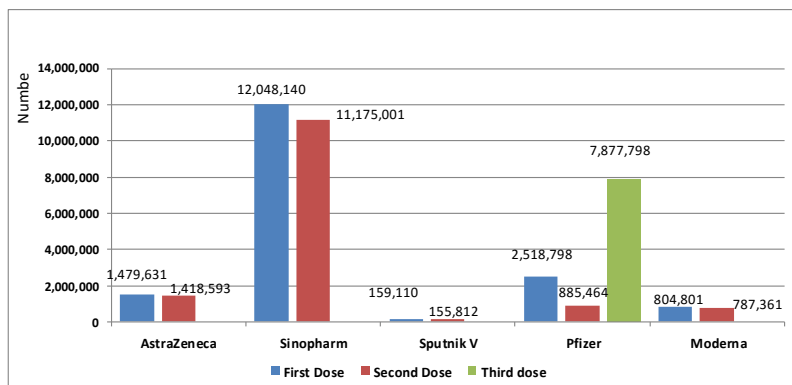


Confirmed COVID-19 deaths by Co-morbidities



## Covid-19 Vaccination Program

Vaccination update : 28.01.2021 to 31.03.2022



Confirmed COVID-19 deaths by sex

