

COVID-19 Epidemiology Sri Lanka

Epidemiology Unit
Ministry of Health

31st January 2022

27.01.2020-31.01.2022

611,185

Total Number of Cases

15,441

Total Number of Deaths

Number Vaccinated

At least 1st dose: 16,676,234

2nd dose : 13,930,315

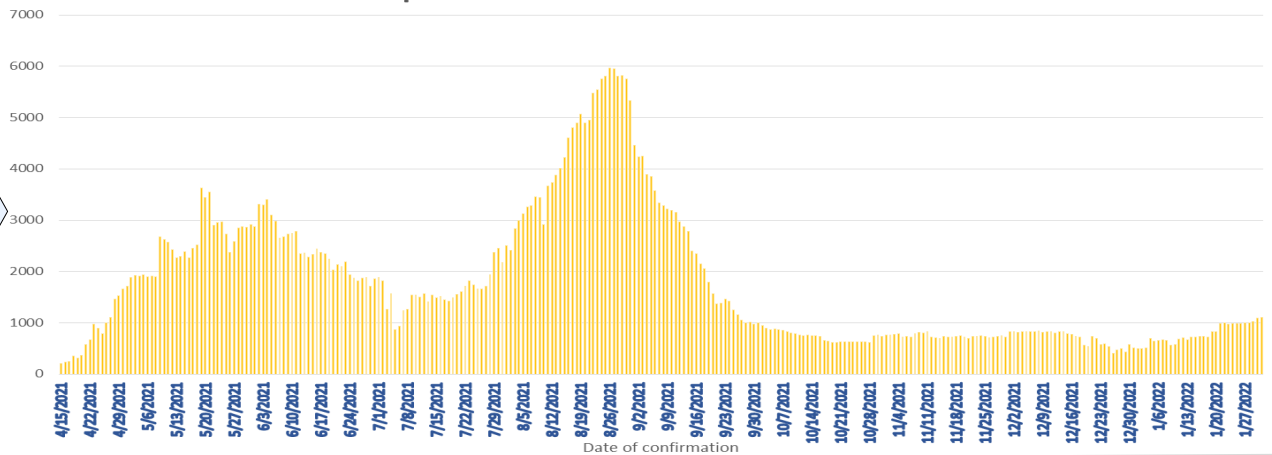
3rd dose : 5,261,005

	Duration	No. of Cases	No. of Deaths	Case* Fatality Rate
1 st wave	27.01.2020-03.10.2020	3,396	13	0.38
2 nd wave	04.10.2020-14.04.2021	92,341	591	0.64
3 rd wave	15.04.2021-31.01.2022	515,448	14,837	2.88

*Case is defined as a laboratory confirmed patient

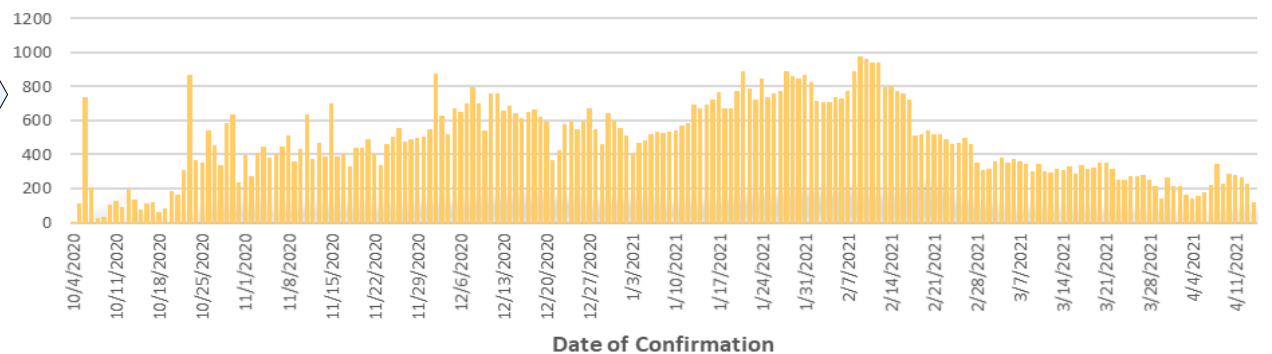
Epi curve: 15.04.2021 to 31.01.2022

3rd wave



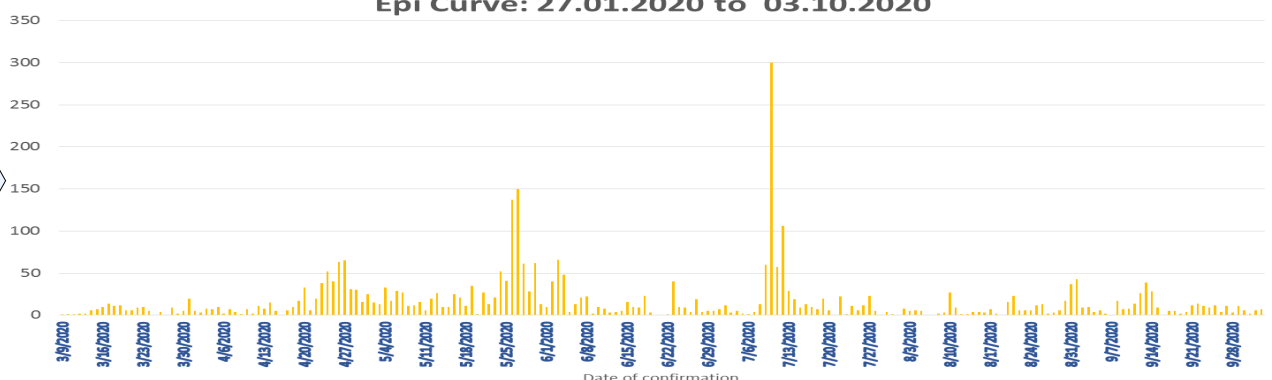
Epi Curve : 04.10.2020 to 14.04.2021

2nd wave



Epi Curve: 27.01.2020 to 03.10.2020

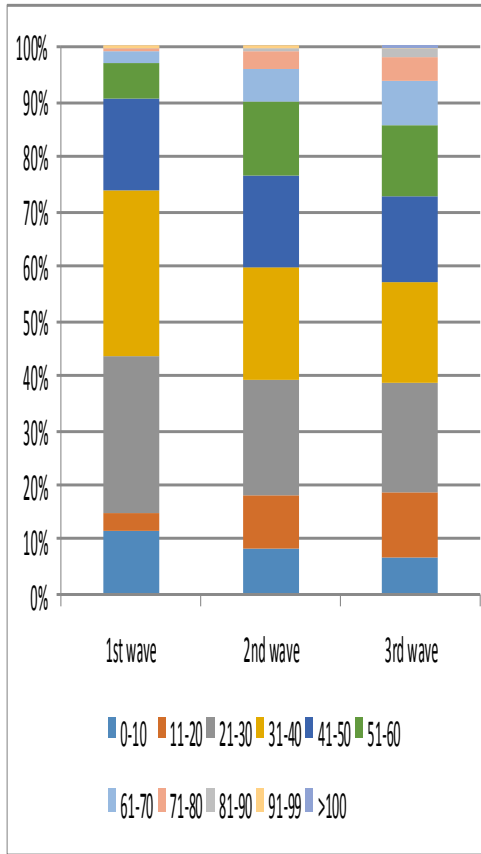
1st wave



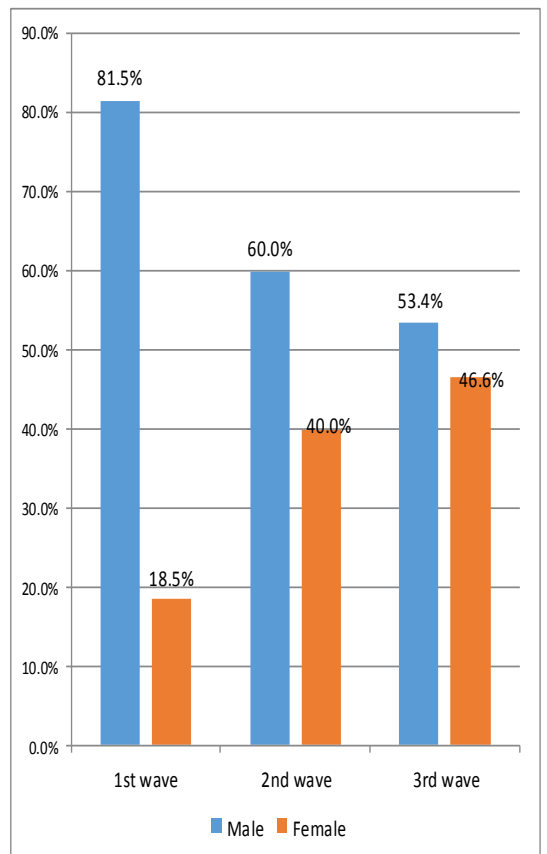
COVID-19 Cases : District Distribution

District	1 st wave	2 nd wave	3 rd wave	Total
Colombo	174	32123	92265	124562
Gampaha	51	18483	87001	105535
Kalutara	72	6986	47987	55045
Kandy	19	5710	14877	20606
Kurunagala	30	3191	26063	29284
Galle	4	2645	37509	40158
Ratnapura	9	3654	18447	22110
Matara	4	1544	18003	19551
Matale	5	1214	13715	14934
Nuwara Eliya	2	1259	10885	12146
Kegalle	10	1770	11214	12994
Jaffna	16	1441	10308	11765
Badulla	4	1358	12393	13755
Puttalam	39	1024	13242	14305
Anuradhapura	31	820	12422	13273
Hambantota	3	710	16694	17407
Trincomalee	4	651	3675	4330
Monaragala	6	545	13375	13926
Polonnaruwa	10	475	4652	5137
Ampara	9	498	13255	13762
Kalmunai	18	1296	3891	5205
Batticaloa	1	699	9008	9708
Vavuniya	2	623	2978	3603
Mullaitivu	0	278	1825	2103
Kilinochchi	0	250	8652	8902
Mannar	0	379	2131	2510

COVID -19 Cases by Age Group

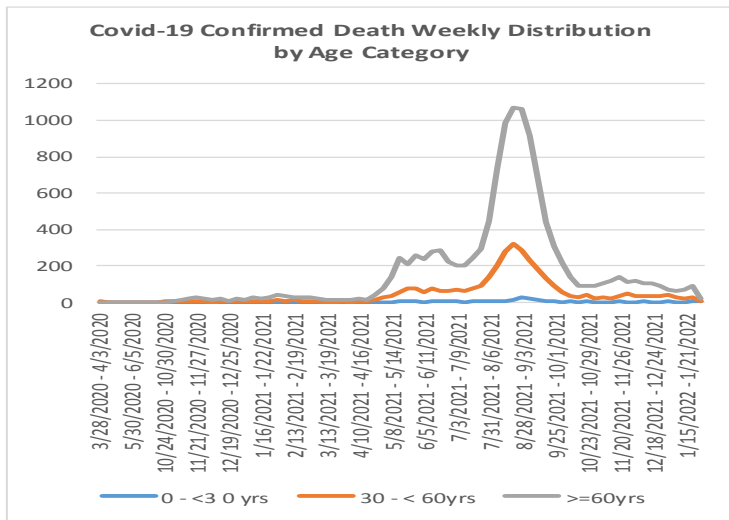


COVID-19 Cases by Sex

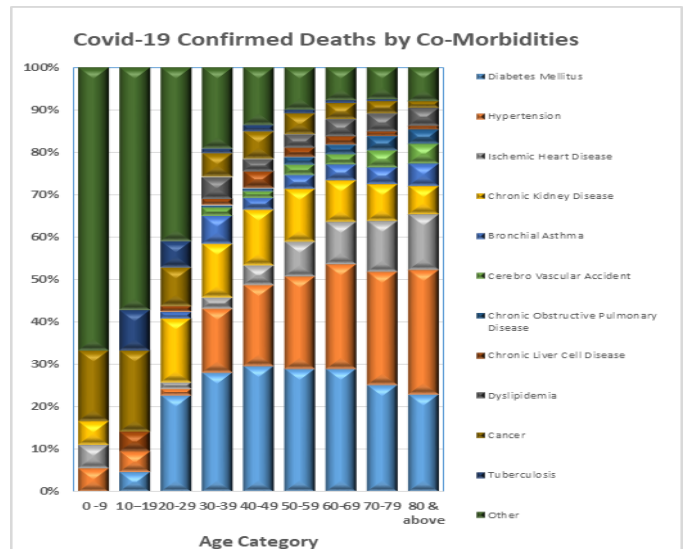


Confirmed COVID-19 Deaths

COVID-19 deaths– weekly distribution by age: 28.03.2020 – 31.01.2022

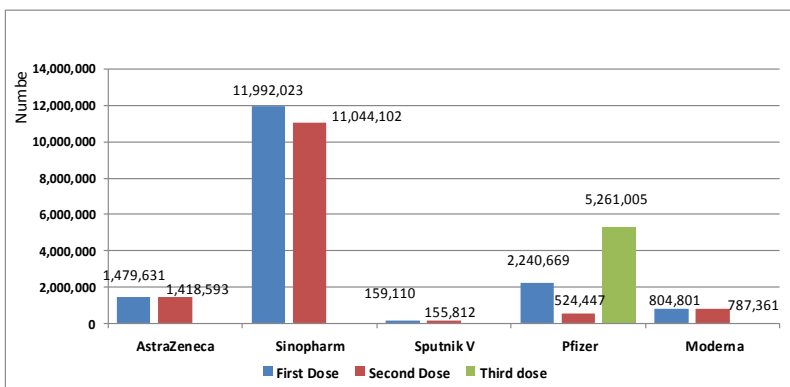


Confirmed COVID-19 deaths by Co-morbidities



Covid-19 Vaccination Program

Vaccination update : 28.01.2021 to 31.01.2022



Confirmed COVID-19 deaths by sex

