



## Epidemiology Unit

Ministry of Health & Indigenous Medical Services

231, De Saram Place, Colombo 10, Sri Lanka

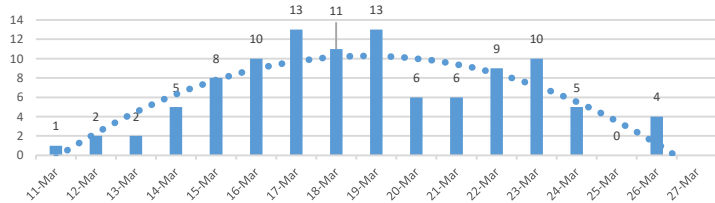
Tele: (+94 11) 2695112, 2681548, 4740490, 4740491, 4740492 Fax: (+94 11) 2696583 E-mail: [chepid@stnet.lk](mailto:chepid@stnet.lk), [epidunit@stnet.lk](mailto:epidunit@stnet.lk) Web: [www.epid.gov.lk](http://www.epid.gov.lk)

### Coronavirus disease 2019 (COVID-19) - Situation Report – 27.03.2020 – 10.00am

An outbreak of pneumonia of unknown reason was first reported on 31<sup>st</sup> December 2019 from Wuhan City in Hubei Province of China. On 7<sup>th</sup> Jan 2020, it was diagnosed as “Novel Corona Virus”. On 30/01, WHO has declared it as a Public Health Emergency of International Concern (PHEIC). On 11/02/2020 the WHO renamed the disease as COVID-19 and on 11/03/2020 declared as pandemic. The incubation period is reported as 2-14 days.

#### Local Situation

New patients - Sri Lanka



- Last confirmed patient identified on 26/03/2020
- Total number of confirmed – 106 (Recovered 7, Inward - 99)
- 99 patients- (IDH 88, BH Mulleriyawa 1, BH Welikanda 10)
- Total number of individuals in hospitals - 238

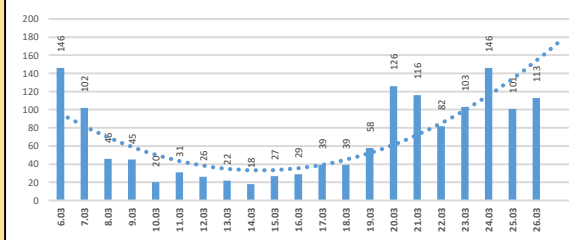
Hospital	Cumulative			Today 10am		
	SL	Foreigners	Total	SL	Foreigners	Total
NIID	555	76	631	97	2	99
NHSL	82	7	89	6	2	8
TH Ragama	109	2	111	11	0	11
TH Karapitiya	121	16	137	12	0	12
TH A'pura	49	2	51	0	0	0
TH Kurun.	118	1	119	4	0	4
TH Jaffna	25	1	26	1	0	1
NH Kandy	63	6	69	6	0	6
TH Battico.	23	0	23	3	0	3
DGH Gampaha	114	4	118	14	0	14
DGH Negombo	141	13	154	6	0	6
TH Rathn.	82	0	82	6	0	6
PGH Badulla	25	1	26	2	1	3
LRH	26	0	26	0	0	0
DMH	7	0	7	0	0	0
DGH Polon'wa	64	6	70	4	0	4
TH Kalubowila	17	0	17	0	0	0
Castle St TH	9	0	9	1	0	1
BH Ham'thota	57	0	57	10	0	10
BH Mona'gala	22	0	22	3	0	3
BH Welikanda	43	1	44	23	1	24
DGH Kaluthara	86	0	86	6	0	6
Chest H. Welisara	6	0	6	2	0	2
BH Mulleriya	1	0	1	1	0	1
BH Homagama	23	1	24	13	1	14
Dr Neville F. Ho	3	0	3	0	0	0
<b>Total</b>	Incorrect to total as transfers counts in both the institutions		<b>231</b>	<b>7</b>		<b>238</b>

Source : Epidemiology Unit, Disease Surveillance System

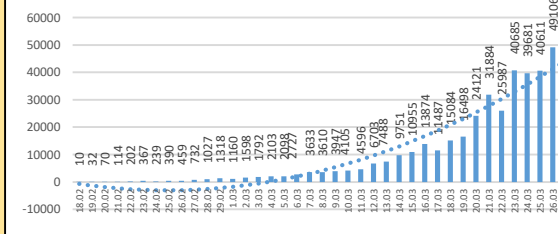
#### Global Situation

- 462,684 – Laboratory\_confirmed cases (81,961 – China, 380,723 – Outside China)
  - 20,834 deaths (3293 – China, 17,541 outside China)
  - Patients are reported from 198 countries/territories
- Ref. WHO situation report - 26/03/2020

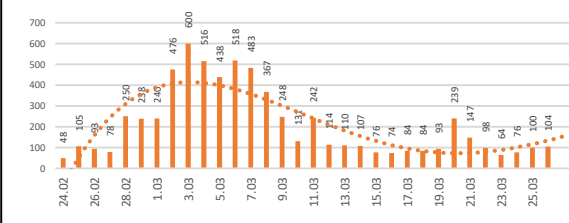
New Patients-China



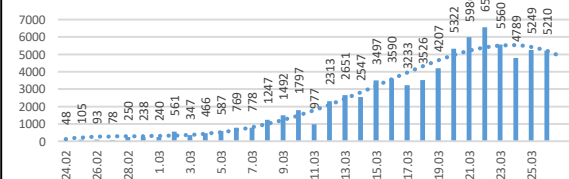
New Patients Outside China



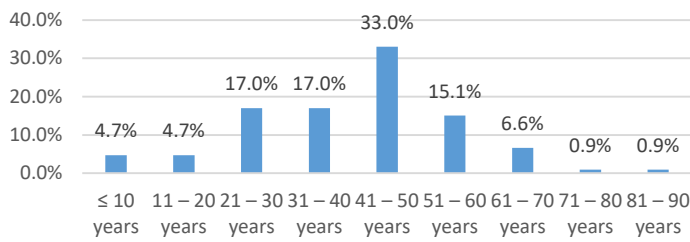
New Patients - S. Korea



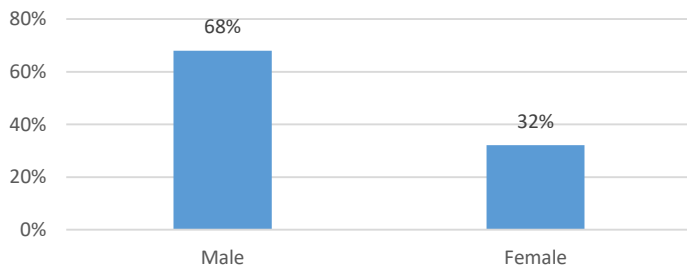
New Patients - Italy



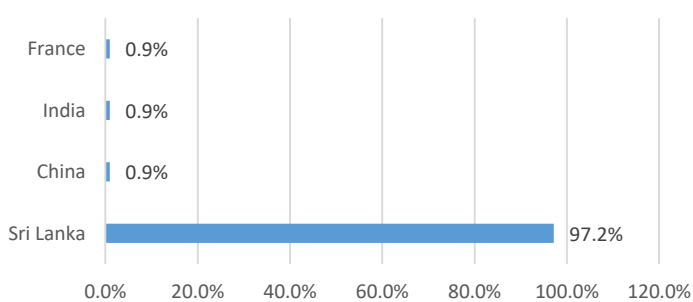
Age distribution of COVID-19 confirmed in Sri Lanka



Gender distribution of COVID-19 confirmed in Sri Lanka



COVID-19 confirmed in Sri Lanka - Nationality



District Distribution of Confirmed Patients

DISTRICT	Count
COLOMBO	25
KALUTARA	15
GAMPAHA	10
PUTTALAM	9
RATNAPURA	3
KURUNEGALA	1
GALLE	1
KEGALLE	1
BATTICOLOA	1
BADULLA	1
JAFFNA	1
MATARA	1
KANDY	0
MATALE	0
NUWARAELIYA	0
HAMBANTOTA	0
KILINOCHCHI	0
MANNAR	0
VAVUNIA	0
MULLATIVU	0
AMPARA	0
TRINCOMALEE	0
ANURADHAPURA	0
POLONNARUWA	0
MONERAGALA	0
KALMUNAI	0
QUARANTINE CENTERS	34
FOREIGNERS	3
<b>Total</b>	<b>106</b>