



Epidemiology Unit

Ministry of Health & Indigenous Medical Services

231, De Saram Place, Colombo 10, Sri Lanka

Tele: (+94 11) 2695112, 2681548, 4740490, 4740491, 4740492 Fax: (+94 11) 2696583 E-mail: chepid@stnet.lk, epidunit@stnet.lk Web: www.epid.gov.lk

Coronavirus disease 2019 (COVID-19) - Situation Report – 16.03.2020 – 10.00am

- An outbreak of pneumonia of unknown reason was first reported on 31st December 2019 from Wuhan City in Hubei Province of China. On 7th Jan 2020, it was diagnosed as “Novel Corona Virus”. On 30th Jan 2020, World Health Organization has declared it as a Public Health Emergency of International Concern (PHEIC). On 11/02/2020 the WHO has introduced a short form for the diseases as COVID-19 and on 11/03/2020 declared as pandemic.
- The incubation period is reported as 2-14 days.
- R_0 (Basic reproduction number) is estimated as 1.4 to 2.5. (R_0 = the number of cases one case generates on average over the course of its infectious period, in an otherwise uninfected or not immune) Ref. European Respiratory Society- www.ersnet.org 29/01/2020
- In the current Sri Lankan context, there is no scientific justification to wear face mask routinely by the general public including children.

Local Situation

- Last confirmed patient identified on 15/03/2020
- Total number of confirmed – 19 (1 Chinese Lady in Jan, 18 SL - all are at IDH.)
- Total number of individuals in hospitals - 212

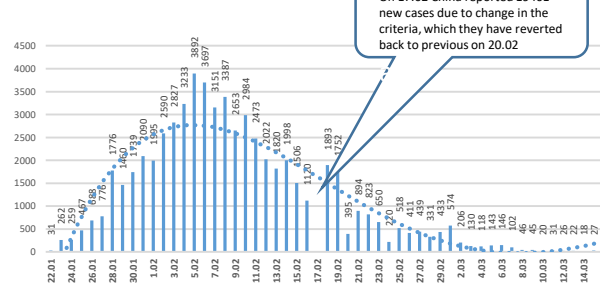
Name of the Hospital	Cumulative			Today 10am		
	Sri Lankans	Foreigners	Total	Sri Lankans	Foreigners	Total
NIID	216	73	289	79	5	84
NHSL	26	3	29	11	1	12
TH Ragama	14	2	16	8	0	8
TH Karapitiya	60	8	68	12	0	12
TH A'pura	9	2	11	2	0	2
TH Kurun.	47	1	48	25	0	25
TH Jaffna	3	0	3	0	0	0
NH Kandy	32	3	35	2	2	4
TH Battico.	2	0	2	1	0	1
DGH Gampaha	28	4	32	15	0	15
DGH Negombo	56	6	62	15	0	15
TH Rathn.	30	0	30	16	0	16
PGH Badulla	10	0	10	2	0	2
LRH	12	0	12	2	0	2
DMH	2	0	2	1	0	1
DGH Polonnaruwa	23	0	23	10	0	10
TH Kalubowila	9	0	9	3	0	3

Source : Epidemiology Unit, Disease Surveillance System

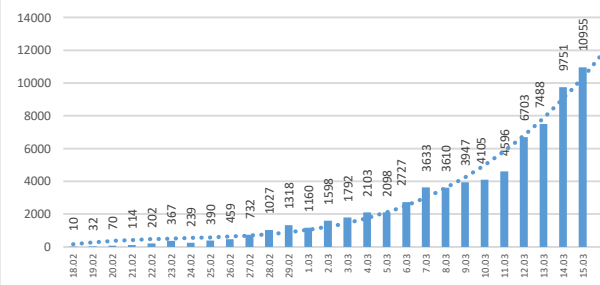
Global Situation

- 153,517 – Laboratory_confirmed cases (81,048 – China, 72,469 – Outside China)
 - 5735 deaths (3204 – China, 2531 outside China)
 - Patients are reported from 143 countries/territories
- Ref. WHO situation report - 15/03/2020

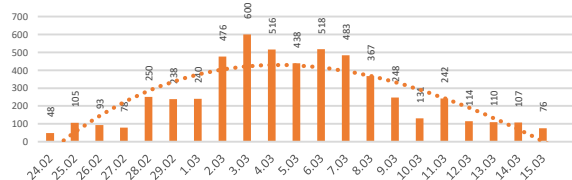
New Patients-China



New Patients Outside China



New Patients - S. Korea



New Patients - Italy

