



COVID-19 Epidemiology Sri Lanka

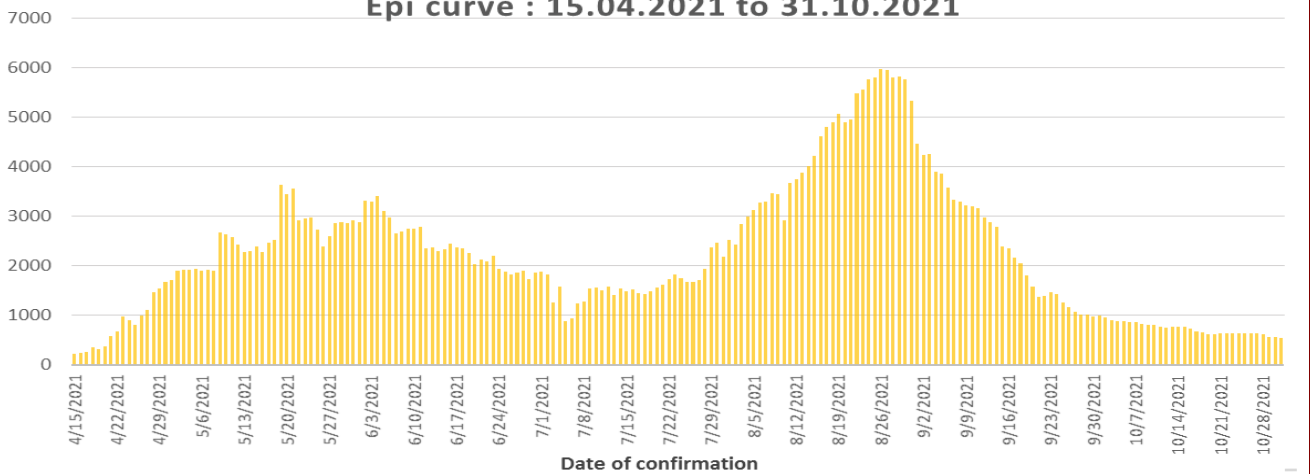
Epidemiology Unit
Ministry of Health

31st October 2021

27.01.2020-31.10.2021	Duration	No. of Cases	No. of Deaths	Case* Fatality Rate
541,073 Total Number of Cases	1st wave 27.01.2020-03.10.2020	3,396	13	0.38
13,743 Total Number of Deaths	2nd wave 04.10.2020-14.04.2021	92,341	591	0.64
Number Vaccinated At least 1 st dose: 15,561,126 2 nd dose : 13,463,511 3 rd dose : 393	3rd wave 15.04.2021-31.10.2021	445,336	13,139	2.95
*Case is defined as a laboratory confirmed patient				

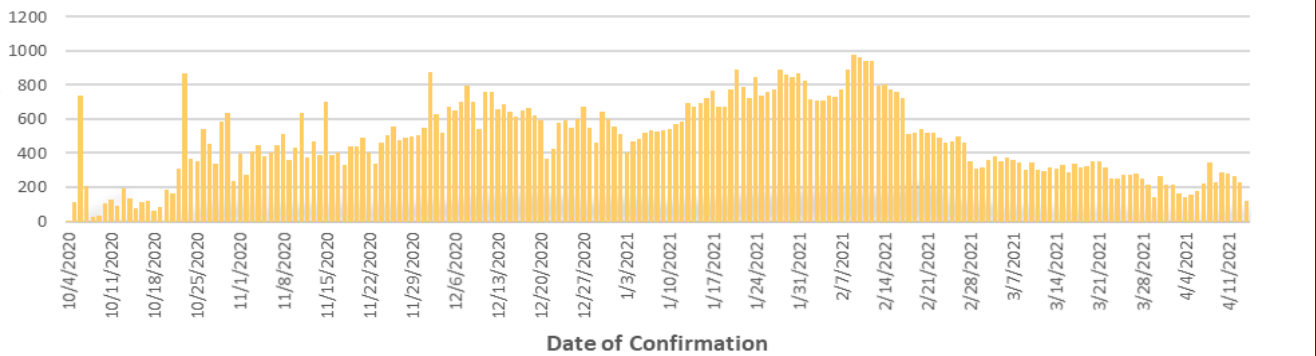
Epi curve : 15.04.2021 to 31.10.2021

3rd wave



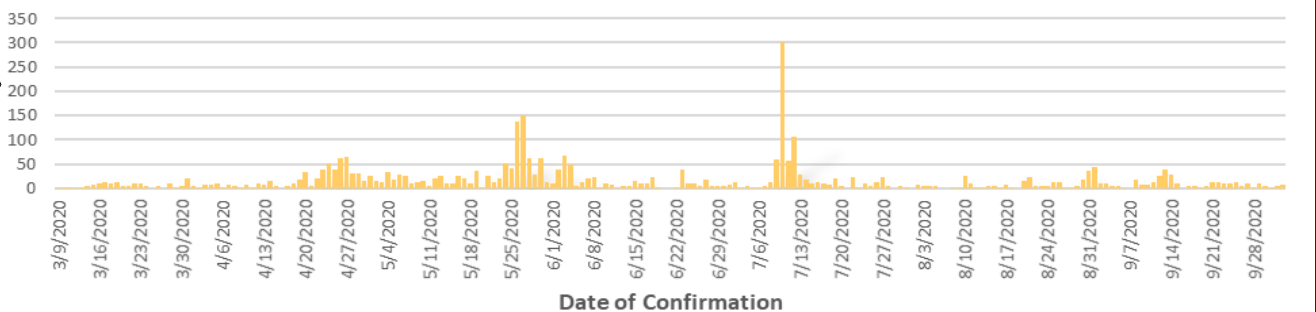
Epi Curve : 04.10.2020 to 14.04.2021

2nd wave



Epi Curve : 09.03.2020 to 03.10.2020

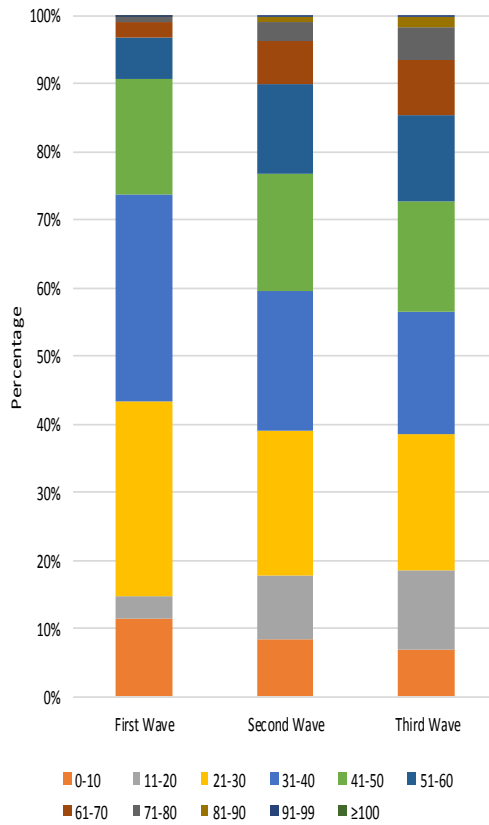
1st wave



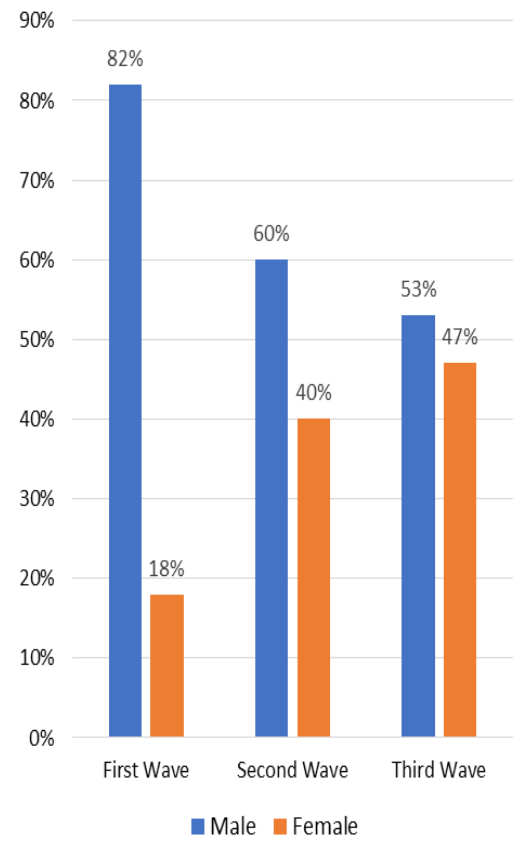
COVID-19 Cases : District Distribution

District	1 st wave	2 nd wave	3 rd wave	Total
Colombo	174	32123	80848	113145
Gampaha	51	18483	77120	95654
Kalutara	72	6986	45000	52058
Kandy	19	5710	13744	19473
Kurunagala	30	3191	22932	26153
Galle	4	2645	30964	33613
Ratnapura	9	3654	15090	18753
Matara	4	1544	12181	13729
Matale	5	1214	11507	12726
Nuwara Eliya	2	1259	10346	11607
Kegalle	10	1770	9928	11708
Jaffna	16	1441	9625	11082
Badulla	4	1358	11367	12729
Puttalam	39	1024	11762	12825
Anuradhapura	31	820	9919	10770
Hambantota	3	710	10938	11651
Trincomalee	4	651	3563	4218
Monaragala	6	545	10321	10872
Polonnaruwa	10	475	4191	4676
Ampara	9	498	10657	11164
Kalmunai	18	1296	3790	5104
Batticaloa	1	699	8331	9031
Vavuniya	2	623	2802	3427
Mullaitivu	0	278	1641	1919
Kilinochchi	0	250	7194	7444
Mannar	0	379	1863	2242

COVID -19 Cases by Age Group

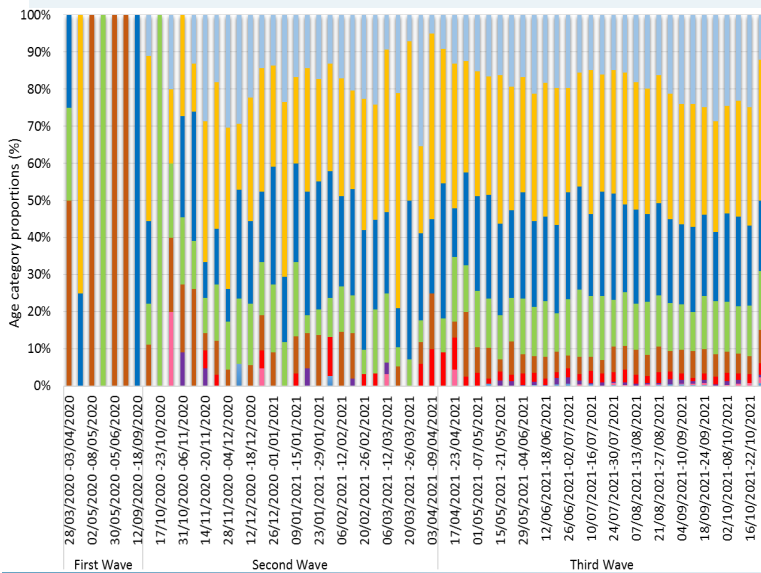


COVID-19 Cases by Sex

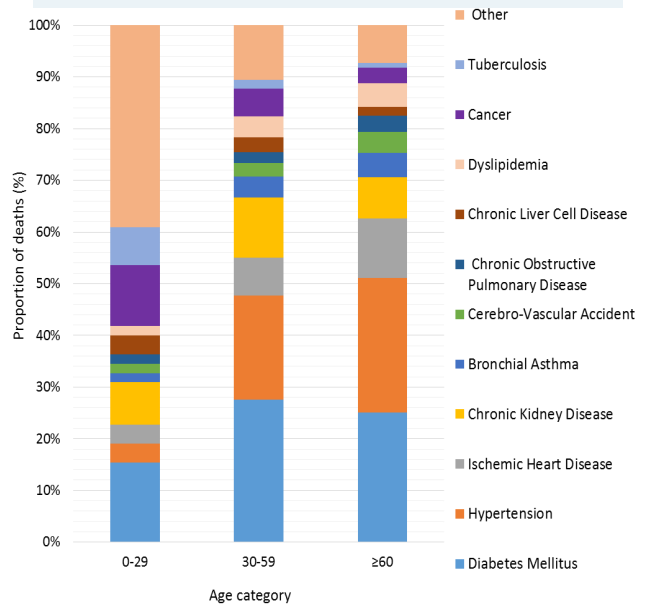


Confirmed COVID-19 Deaths

COVID-19 deaths— weekly distribution by age: 28.03.2020 –31.10.2021

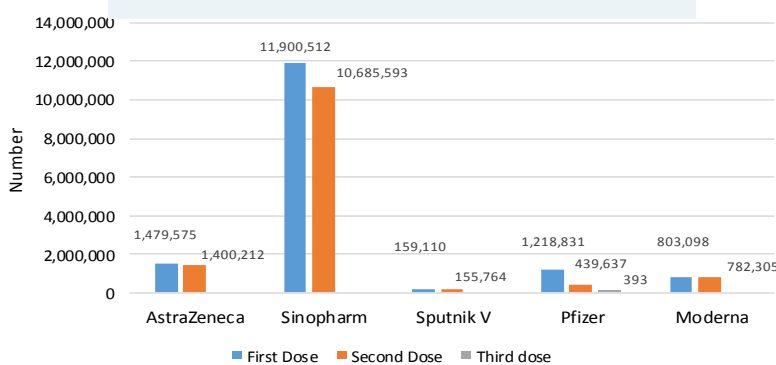


Confirmed COVID-19 deaths by Co-morbidities



Covid-19 Vaccination Program

Vaccination update : 28.01.2021- 31.10.2021



Confirmed COVID-19 deaths by sex

