

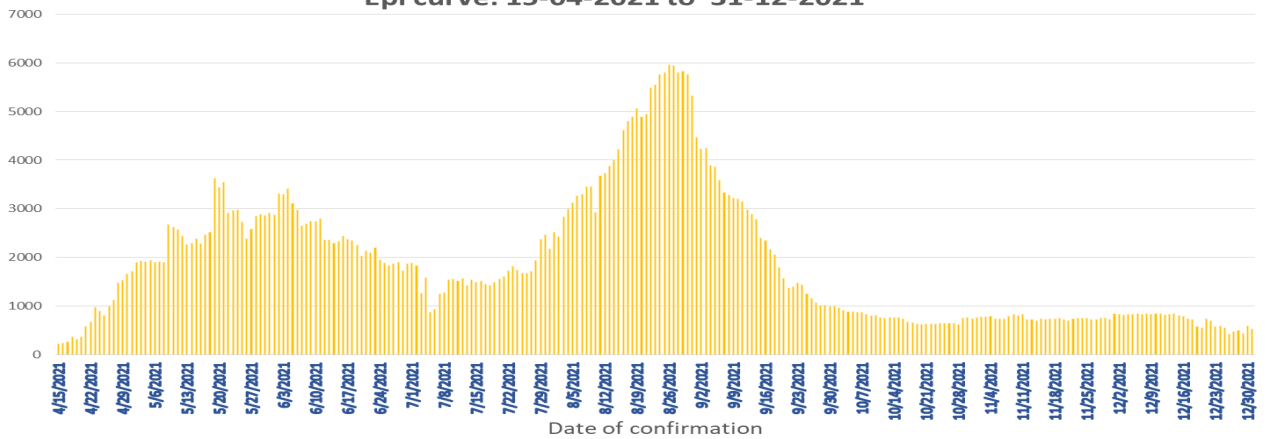
# COVID-19 Epidemiology Sri Lanka

Epidemiology Unit  
Ministry of Health

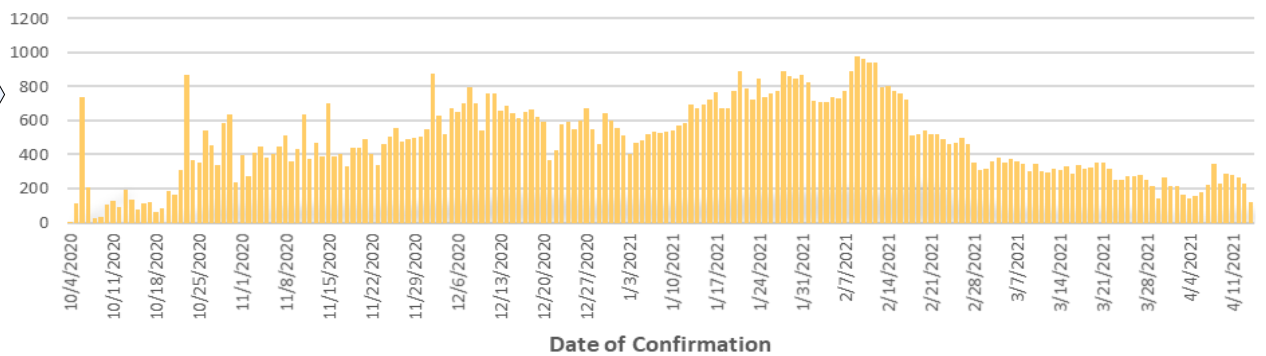
31<sup>st</sup> December 2021

| 27.01.2020-31.12.2021  | Duration   | No. of Cases   | No. of Deaths | Case* Fatality Rate |
|--|--|----------------|---------------|---------------------|
| <b>587,245</b><br>Total Number of Cases  | <b>1<sup>st</sup> wave</b> 27.01.2020-03.10.2020 | <b>3,396</b>   | <b>13</b>     | <b>0.38</b>         |
| <b>14,979</b><br>Total Number of Deaths  | <b>2<sup>nd</sup> wave</b> 04.10.2020-14.04.2021 | <b>92,341</b>  | <b>591</b>    | <b>0.64</b>         |
| <b>Number Vaccinated</b><br>At least 1 <sup>st</sup> dose: 15,992,877<br>2 <sup>nd</sup> dose : 13,845,347<br>3 <sup>rd</sup> dose : 4,052,911 | <b>3<sup>rd</sup> wave</b> 15.04.2021-31.12.2021 | <b>491,508</b> | <b>14,375</b> | <b>2.92</b>         |
| *Case is defined as a laboratory confirmed patient   |  |                |               |                     |

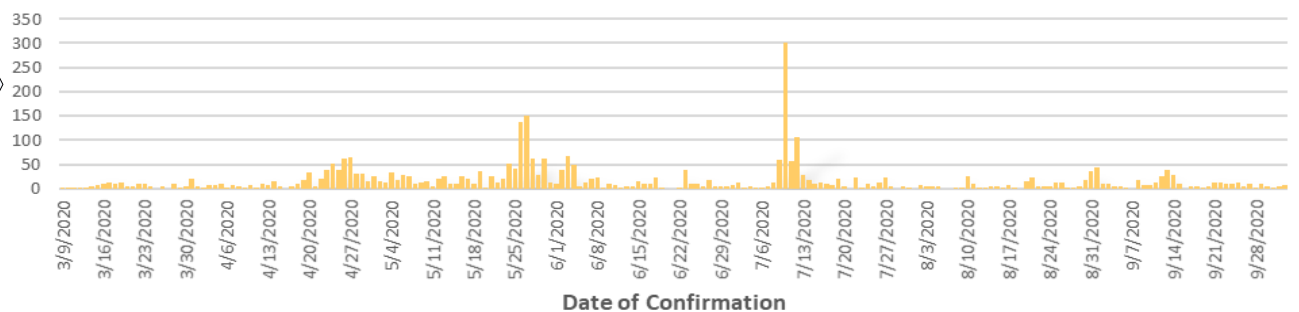
Epi curve: 15-04-2021 to 31-12-2021



Epi Curve : 04.10.2020 to 14.04.2021



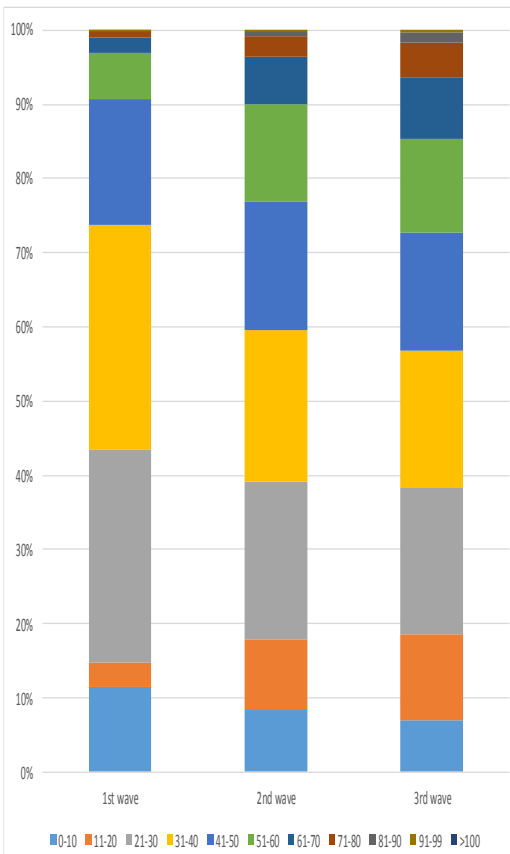
Epi Curve : 09.03.2020 to 03.10.2020



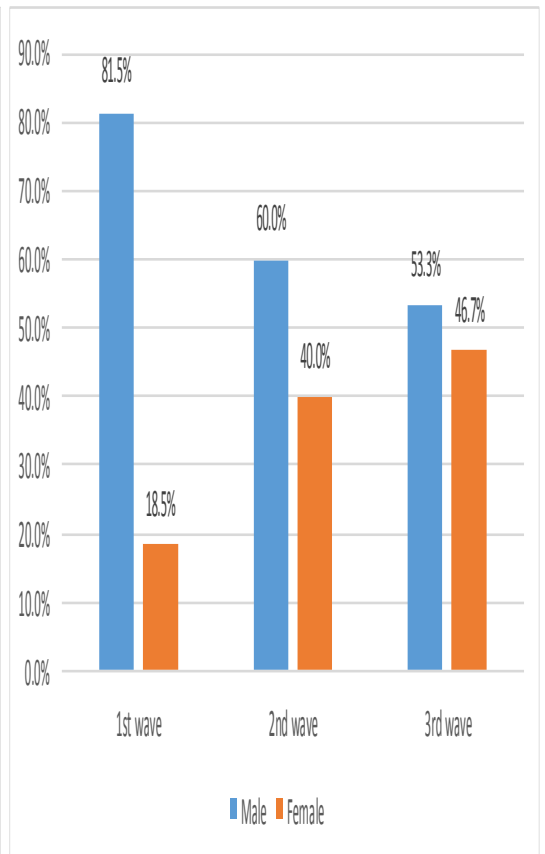
### COVID-19 Cases : District Distribution

| District     | 1 <sup>st</sup> wave | 2 <sup>nd</sup> wave | 3 <sup>rd</sup> wave | Total  |
|--------------|----------------------|----------------------|----------------------|--------|
| Colombo      | 174                  | 32123                | 85340                | 117637 |
| Gampaha      | 51                   | 18483                | 83013                | 101547 |
| Kalutara     | 72                   | 6986                 | 46825                | 53883  |
| Kandy        | 19                   | 5710                 | 14321                | 20050  |
| Kurunagala   | 30                   | 3191                 | 25444                | 28665  |
| Galle        | 4                    | 2645                 | 35682                | 38331  |
| Ratnapura    | 9                    | 3654                 | 17635                | 21298  |
| Matara       | 4                    | 1544                 | 16427                | 17975  |
| Matale       | 5                    | 1214                 | 13309                | 14528  |
| Nuwara Eliya | 2                    | 1259                 | 10705                | 11966  |
| Kegalle      | 10                   | 1770                 | 10984                | 12764  |
| Jaffna       | 16                   | 1441                 | 10159                | 11616  |
| Badulla      | 4                    | 1358                 | 12130                | 13492  |
| Puttalam     | 39                   | 1024                 | 12778                | 13841  |
| Anuradhapura | 31                   | 820                  | 11901                | 12752  |
| Hambantota   | 3                    | 710                  | 15469                | 16182  |
| Trincomalee  | 4                    | 651                  | 3648                 | 4303   |
| Monaragala   | 6                    | 545                  | 12933                | 13484  |
| Polonnaruwa  | 10                   | 475                  | 4562                 | 5047   |
| Ampara       | 9                    | 498                  | 12900                | 13407  |
| Kalmunai     | 18                   | 1296                 | 3803                 | 5117   |
| Batticaloa   | 1                    | 699                  | 8476                 | 9176   |
| Vavuniya     | 2                    | 623                  | 2950                 | 3575   |
| Mullaitivu   | 0                    | 278                  | 1781                 | 2059   |
| Kiilinochchi | 0                    | 250                  | 8376                 | 8626   |
| Mannar       | 0                    | 379                  | 2098                 | 2477   |

### COVID-19 Cases by Age Group

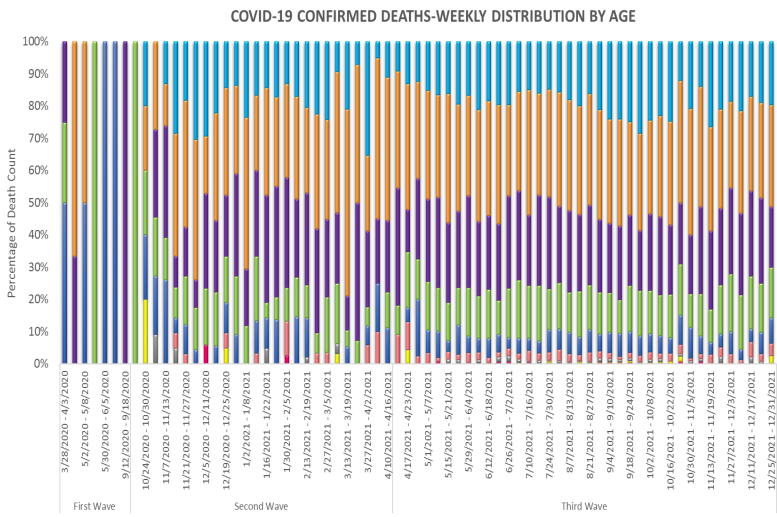


### COVID-19 Cases by Sex

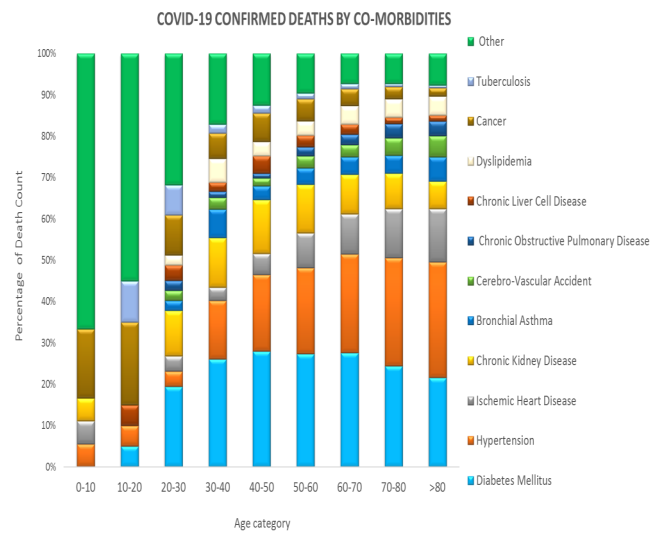


## Confirmed COVID-19 Deaths

### COVID-19 deaths– weekly distribution by age: 28.03.2020 – 31.12.2021

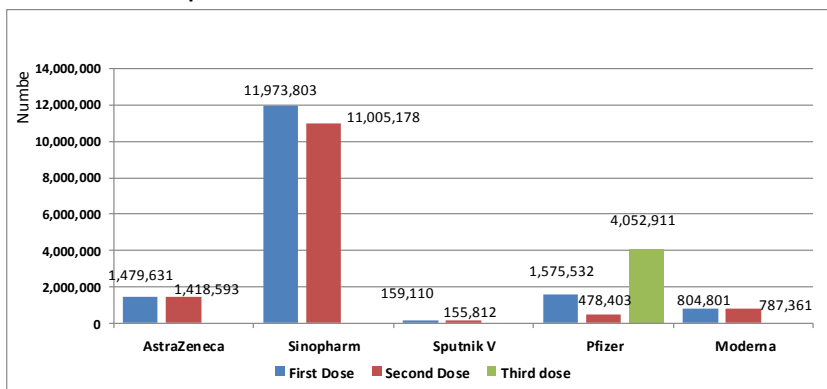


### Confirmed COVID-19 deaths by Co-morbidities



## Covid-19 Vaccination Program

### Vaccination update : 28.01.2021 to 31.12.2021



### Confirmed COVID-19 deaths by sex

