



COVID-19 Epidemiology Sri Lanka

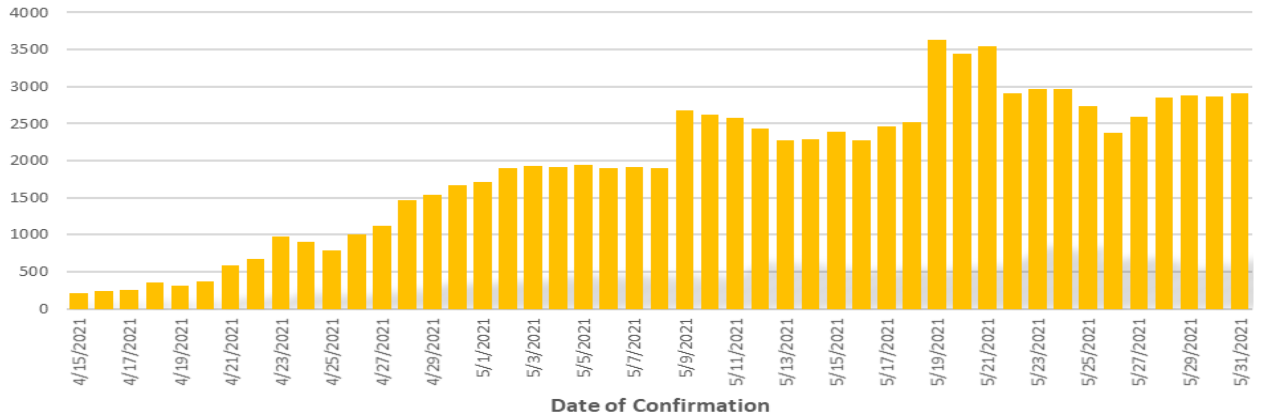
Epidemiology Unit
Ministry of Health

31st May 2021

27.01.2020-31.05.2021	Duration	No. of Cases	No. of Deaths	Case* Fatality Rate
186,364 Total Number of Cases	1st wave 27.01.2020-03.10.2020	3,396	13	0.38
1,484 Total Number of Deaths	2nd wave 04.10.2020-14.04.2021	92,341	591	0.64
Number Vaccinated At least 1 st dose - 1,691,562 2 nd dose - 349,745	3rd wave 15.04.2021-31.05.2021	90,627	880	0.97
* Case is defined as a laboratory confirmed patient				

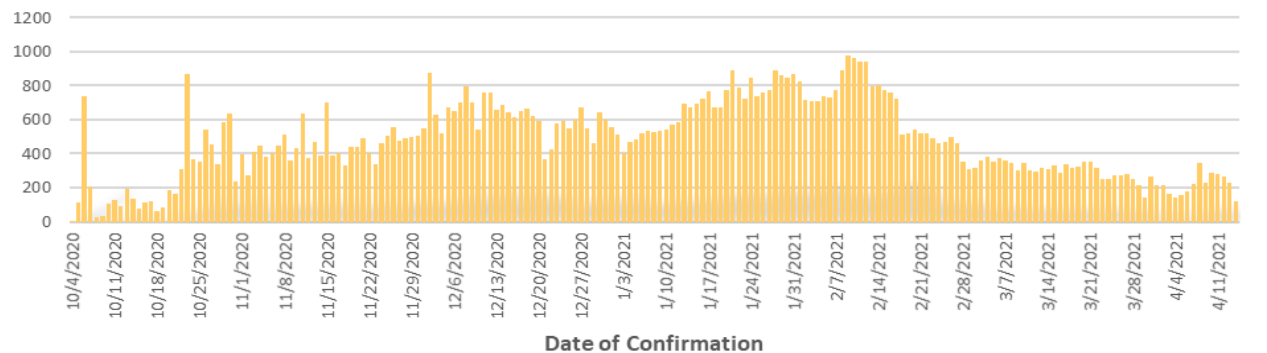
Epi curve : 15.04.2021 to 31.05.2021

3rd wave



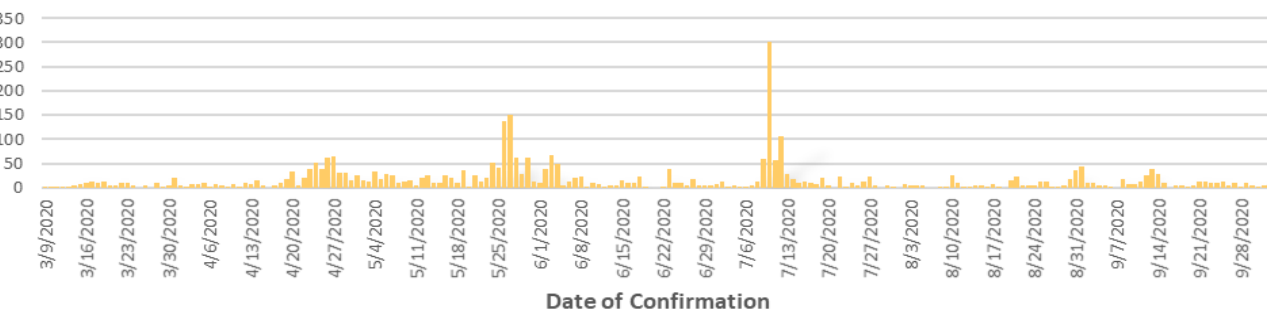
Epi Curve : 04.10.2020 to 14.04.2021

2nd wave



Epi Curve : 09.03.2020 to 03.10.2020

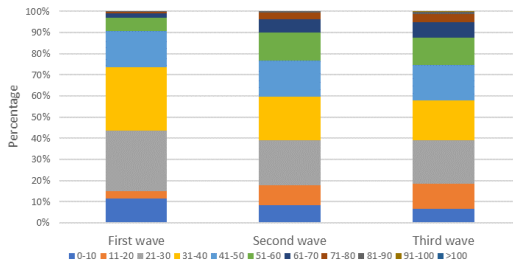
1st wave



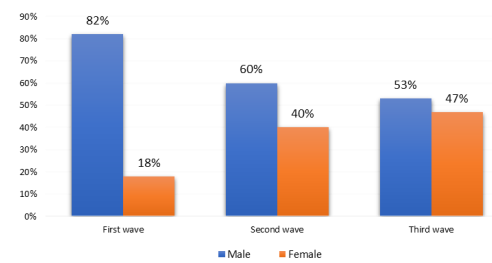
COVID-19 Cases : District Distribution

District	1 st wave	2 nd wave	3 rd wave	Total
Colombo	174	32123	16006	48303
Gampaha	51	18483	13673	32207
Kalutara	72	6986	12131	19189
Kandy	19	5710	4170	9899
Kurunagala	30	3191	6013	9234
Galle	4	2645	4954	7603
Ratnapura	9	3654	3873	7536
Matara	4	1544	2687	4235
Matale	5	1214	2753	3972
Nuwara Eliya	2	1259	2612	3873
Kegalle	10	1770	1879	3659
Jaffna	16	1441	1558	3015
Badulla	4	1358	1565	2927
Puttalam	39	1024	1611	2674
Anuradhapura	31	820	1652	2503
Hambantota	3	710	1611	2324
Trincomalee	4	651	1526	2181
Monaragala	6	545	1332	1883
Polonnaruwa	10	475	1110	1595
Ampara	9	498	927	1434
Kalmunai	18	1296	87	1401
Batticaloa	1	699	702	1402
Vavuniya	2	623	377	1002
Mullaitivu	0	278	560	838
Kilinochchi	0	250	598	848
Mannar	0	379	171	550

COVID-19 Cases by Age Group

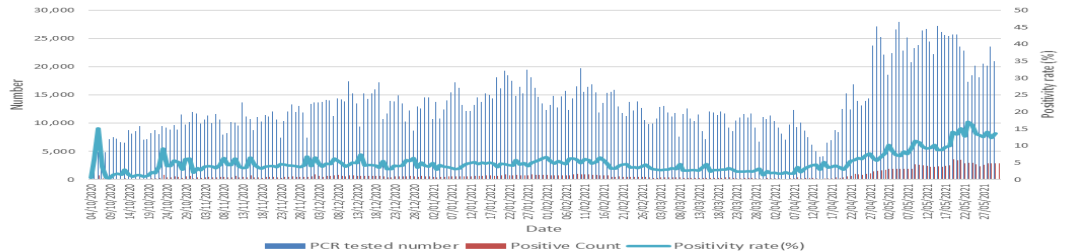


COVID-19 Cases by Sex

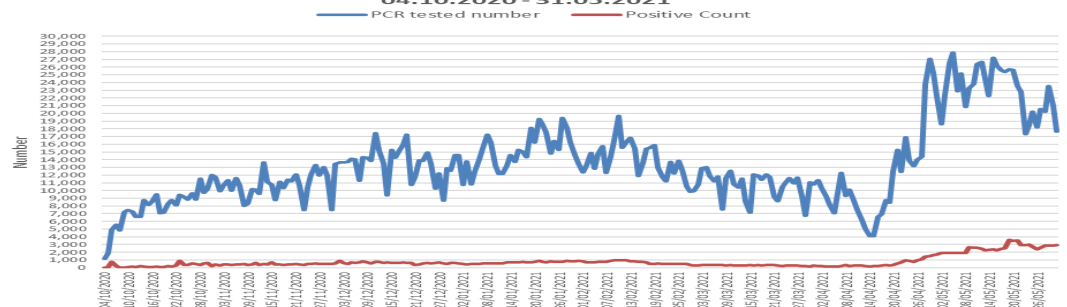


COVID-19 Testing

PCR Tested Number, Positive Number and Positivity Rate 04.10.2020-31.05.2021



Number of PCR Tests Performed and Confirmed Cases 04.10.2020 - 31.05.2021



COVID-19 Confirmed Deaths

COVID-19 deaths - age category proportions by weekly : 28.03.2020 - 31.05.2021

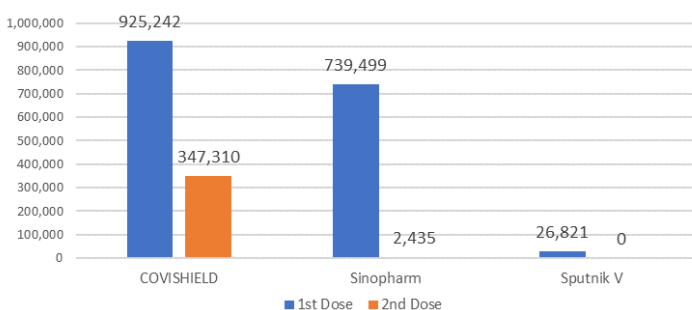


COVID-19 confirmed deaths by co-morbidities

Co-morbidities	Total						Total	Total
	<30 Yrs		30-60 Yrs		>60 Yrs			
Total Number with Co-morbidities	11	58%	312	83%	924	85%	1247	84%
Diabetes Mellitus	1	9%	174	56%	507	55%	682	55%
Hypertension	0	0%	118	38%	516	56%	634	51%
Ischemic Heart Disease	0	0%	44	14%	218	24%	262	21%
Chronic Kidney Disease	0	0%	72	23%	169	18%	241	19%
Bronchial Asthma	0	0%	30	10%	111	12%	141	11%
Cerebro Vascular Accident	0	0%	7	2%	63	7%	70	6%
Chronic Obstructive Pulmonary Disease	0	0%	9	3%	59	6%	68	5%
Chronic Liver Cell Disease	1	9%	10	3%	27	3%	38	3%
Dyslipidemia	0	0%	19	6%	80	9%	99	8%
Cancer	3	27%	34	11%	58	6%	95	8%
Tuberculosis	1	9%	18	6%	12	1%	31	2%
Other	7	64%	62	20%	171	19%	240	19%
Co-morbidities reported as "No"	8	42%	59	16%	149	14%	216	15%
Co-morbidity status "Not known"	0	0%	6	2%	15	1%	21	1%
Total	19	1%	377	25%	1088	73%	1484	100%

Covid-19 Vaccination Program

Vaccination Update 28.01.2021-31.05.2021



COVID-19 confirmed total deaths by sex

